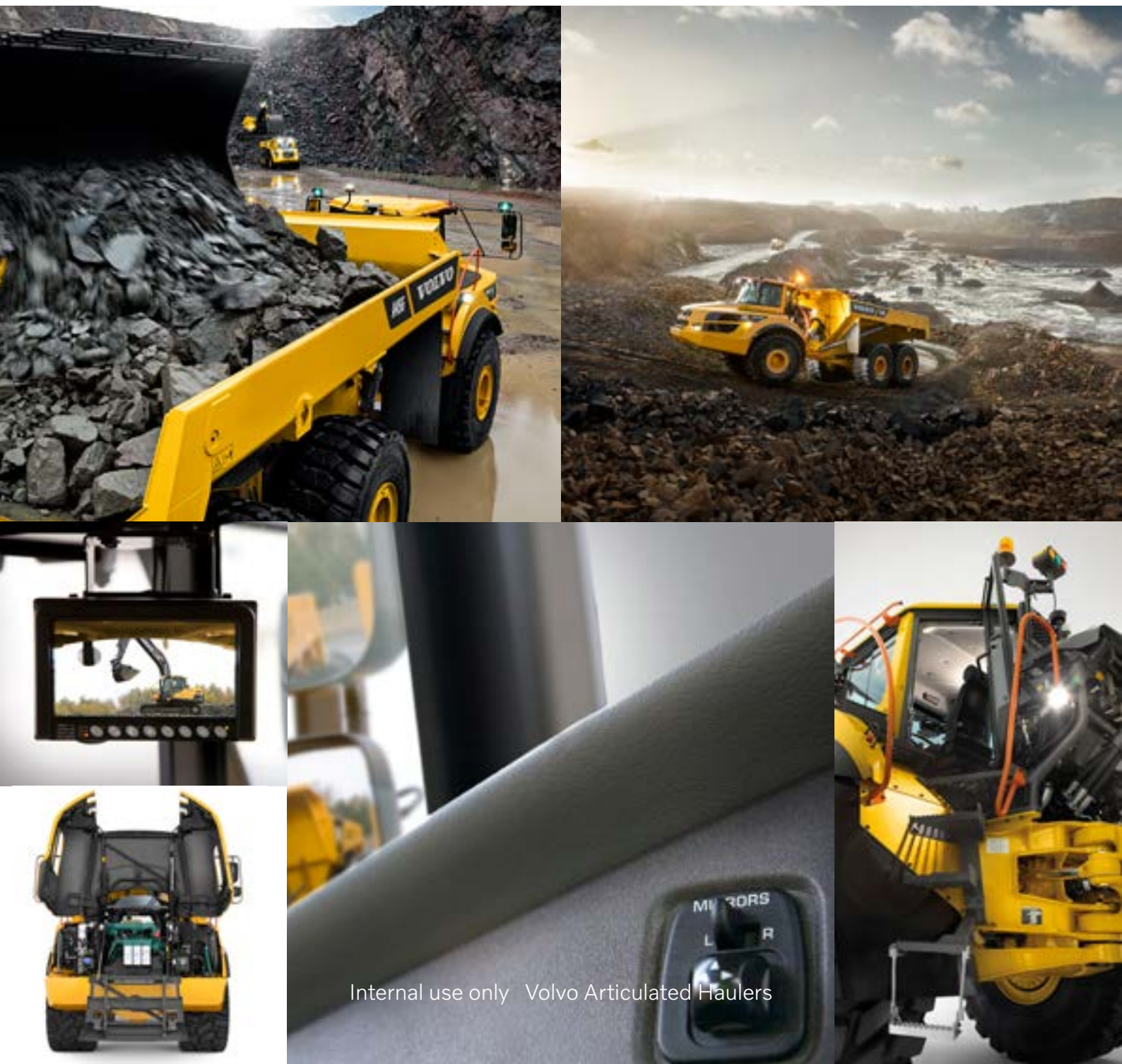


**V O L V O**

**OPTIONS CATALOGUE**

# ARTICULATED HAULERS



Internal use only Volvo Articulated Haulers



# Table of content

<b>Table of content</b>	<b>2</b>	<b>Electrics</b>	<b>25</b>
<b>Options - Alphabetical order</b>	<b>4</b>	Work lights. . . . .	25
<b>Options - Availability by machine</b>	<b>6</b>	Work lights, LED . . . . .	25
<b>General</b>	<b>8</b>	Entrance light . . . . .	26
CE-marking . . . . .	8	Headlights . . . . .	26
CE-conformity document (HC only). . . . .	8	Warning beacon, LED . . . . .	27
Noise reduction kit (fulfils 2000/14/EC) . . . . .	9	Seat belt indicator, external . . . . .	27
License plate bracket (illuminated) . . . . .	9	Reverse alarm . . . . .	27
Reflector kit . . . . .	10	Reverse alarm, white noise. . . . .	28
Emergency steering, reverse (France). . . . .	10	Rear vision system . . . . .	28
Air tank, ASME certified . . . . .	10	Jump start connector, NATO-type . . . . .	28
SMV sign (Slow moving vehicle) . . . . .	10	<b>Power transmission</b>	<b>29</b>
Sign 30 km/h . . . . .	11	Long haul kit. . . . .	29
Sign 50 km/h . . . . .	11	<b>Body</b>	<b>30</b>
Warning triangle. . . . .	11	Body Options Introduction . . . . .	30
On Board Weighing (OBW) . . . . .	12	Standard body without wear plates . . . . .	30
Haul Assist. . . . .	13	Underground body without wear plates . . . . .	30
Siberian kit -40 degrees C . . . . .	14	Wear plates, 450 HB, 8 mm. . . . .	31
Tire Pressure Monitoring System (TPMS) . . . . .	14	Wear plates, heavy duty . . . . .	31
<b>Hauler Chassis and body building</b>	<b>15</b>	Side extension, 200 mm . . . . .	32
Hauler Chassis (without body). . . . .	15	Side extension, light material . . . . .	32
Frame extension. . . . .	16	Tailgate, overhung, wire-operated . . . . .	33
Bogie Extension. . . . .	16	Tailgate overhung, linkage-operated . . . . .	33
Hydraulic controlled by lever. . . . .	17	Tailgate, underhung. . . . .	34
Hydraulic controlled by switch. . . . .	17	Front spillguard, extra. . . . .	34
CAN-BUS Interface. . . . .	17	Body exhaust heating. . . . .	35
Electrical Interface . . . . .	18	<b>Wheels</b>	<b>36</b>
PDS Communication Interface (Proximity Detection System) . . . . .	18	Tires . . . . .	36
Hoist Cylinders kit (HC Only) . . . . .	19	Tire classes . . . . .	37
<b>Engine</b>	<b>20</b>	Tire maintenance . . . . .	38
Air filter, heavy duty, EON . . . . .	20	Mudflaps and mudguard wideners, front of bogie. . . . .	39
High engine idle speed . . . . .	20	Rear mudflaps, front of bogie . . . . .	39
External emergency engine stop . . . . .	20	<b>Cab/Operator environment</b>	<b>40</b>
Engine heater . . . . .	21	Universal key. . . . .	40
Cable kit for cab electric heater 240 V . . . . .	21	Underground cab (lowered 270 mm) . . . . .	40
Engine shutdown timer. . . . .	21	Operator seats. . . . .	40
Air pre-cleaner, cyclone type . . . . .	22	Armrest. . . . .	41
Air pre-cleaner, oil-bath type . . . . .	22	Head restraint . . . . .	41
Engine Heater, diesel fueled . . . . .	22	Seat belt XXL, non retractable . . . . .	42
Fuel filter, extra . . . . .	23	Cab heating/ventilation timer . . . . .	42
Fuel heater. . . . .	23	Radio installation kit . . . . .	42
Fast fueling system . . . . .	23	Radio with Bluetooth/USB/AUX . . . . .	43
Speed limiter, 25 km/h . . . . .	24	Rear view mirrors, adjustable electrically heated . . . . .	43
Speed limiter, 30 km/h . . . . .	24	Anchorage, operator's manual . . . . .	43
		Sun blinds, side windows . . . . .	44
		HEPA cab filter (asbestos dust protection filter) . . . . .	44
		Rear windscreen wiper and washer . . . . .	44
		Anti-theft system (pin code) . . . . .	45
		Safety kit (first aid kit and fire extinguisher) . . . . .	45
		Front protection, rubber . . . . .	45
		Air blow gun . . . . .	46

---

## Hydraulics 47

Hydraulic fluid, biodegradable . . . . .	47
Hydraulic fluid, hot climate . . . . .	47
Arctic oil kit . . . . .	47
No Auxiliary Hydraulics (HC only) . . . . .	47
Hydraulics Open Center 25 MPa (HC only) . . . . .	48
Hydraulics Load Sensing 25 MPa (HC only) . . . . .	48
Hydraulics Open Center 32,5 MPa (HC only) . . . . .	48

---

## Service and maintenance 49

Tool kit . . . . .	49
Auto lube system for standard machine . . . . .	49
Lubricating hoses Ground Level Greasing . . . . .	49
Lubricating hoses Ground Level Greasing for tailgate. . .	50
Engine auto shutdown . . . . .	50
Auto lube system for tailgate. . . . .	50

---

## Miscellaneous 51

Towing hitch . . . . .	51
A25G Twin steer . . . . .	51
Twin steer body . . . . .	51
Wheel blocks . . . . .	52
Fire Suppression System. . . . .	52
Fire extinguisher. . . . .	54
Bracket Adj, Fire Extinguisher . . . . .	54
Transport sealing . . . . .	54
Lifting tools, wheel mounted. . . . .	55
Transport rust protection R2. . . . .	55
CareTrack . . . . .	56

### Forword

More information and support documents for some options presented here are available in VEIDA accessible throught your Volvo Dealer Network (VDN) account.

This document follows an update schedule with set windows. This means that you can see differences in MOM before changes are made in this document.

For more detailed information regarding aftermarket options, please consult PROSIS and VDN.

# Options - Alphabetical order

A25G Twin steer. . . . .	51	Long haul kit . . . . .	29
Air blow gun . . . . .	46	Lubricating hoses Ground Level Greasing. . . . .	49
Air filter, heavy duty, EON . . . . .	20	Lubricating hoses Ground Level Greasing for tailgate . . . . .	50
Air pre-cleaner, cyclone type . . . . .	22	Mudflaps and mudguard wideners, front of bogie . . . . .	39
Air pre-cleaner, oil-bath type . . . . .	22	No Auxiliary Hydraulics (HC only) . . . . .	47
Air tank, ASME certified . . . . .	10	Noise reduction kit (fulfils 2000/14/EC) . . . . .	9
Anchorage, operator's manual . . . . .	43	On Board Weighing (OBW) . . . . .	12
Anti-theft system (pin code) . . . . .	45	Operator seats . . . . .	40
Arctic oil kit. . . . .	47	PDS Communication Interface (Proximity Detection System)	
Armrest . . . . .	41	Radio installation kit. . . . .	18
Auto lube system for standard machine . . . . .	49	Radio with Bluetooth/USB/AUX. . . . .	43
Auto lube system for tailgate . . . . .	50	Rear mudflaps, front of bogie. . . . .	39
Body exhaust heating . . . . .	35	Rear view mirrors, adjustable electrically heated. . . . .	43
Body Options Introduction . . . . .	30	Rear vision system. . . . .	28
Bogie Extension . . . . .	16	Rear windscreen wiper and washer . . . . .	44
Bracket Adj, Fire Extinguisher . . . . .	54	Reflector kit . . . . .	10
Cab heating/ventilation timer . . . . .	42	Reverse alarm . . . . .	27
Cable kit for cab electric heater 240 V . . . . .	21	Reverse alarm, white noise . . . . .	28
CAN-BUS Interface . . . . .	17	Safety kit (first aid kit and fire extinguisher). . . . .	45
CareTrack. . . . .	56	Seat belt indicator, external. . . . .	27
CE-conformity document (HC only) . . . . .	8	Seat belt XXL, non retractable . . . . .	42
CE-marking . . . . .	8	Siberian kit -40 degrees C . . . . .	14
Electrical Interface. . . . .	18	Side extension, 200 mm . . . . .	32
Emergency steering, reverse (France) . . . . .	10	Side extension, light material. . . . .	32
Engine auto shutdown . . . . .	50	Sign 30 km/h . . . . .	11
Engine heater . . . . .	21	Sign 50 km/h . . . . .	11
Engine Heater, diesel fueled . . . . .	22	SMV sign (Slow moving vehicle). . . . .	10
Engine shutdown timer . . . . .	21	Speed limiter, 25 km/h . . . . .	24
Entrance light . . . . .	26	Speed limiter, 30 km/h . . . . .	24
External emergency engine stop. . . . .	20	Standard body without wear plates . . . . .	30
Fast fueling system . . . . .	23	Sun blinds, side windows. . . . .	44
Fire extinguisher . . . . .	54	Tailgate overhung, linkage-operated. . . . .	33
Fire Suppression System . . . . .	52	Tailgate, overhung, wire-operated . . . . .	33
Frame extension . . . . .	16	Tailgate, underhung . . . . .	34
Front protection, rubber. . . . .	45	Tire classes . . . . .	37
Front spillguard, extra . . . . .	34	Tire maintenance . . . . .	38
Fuel filter, extra. . . . .	23	Tire Pressure Monitoring System (TPMS) . . . . .	14
Fuel heater . . . . .	23	Tires . . . . .	36
Haul Assist . . . . .	13	Tool kit . . . . .	49
Hauler Chassis (without body) . . . . .	15	Towing hitch . . . . .	51
Headlights . . . . .	26	Transport rust protection R2 . . . . .	55
Head restraint . . . . .	41	Transport sealing. . . . .	54
HEPA cab filter (asbestos dust protection filter) . . . . .	44	Twin steer body . . . . .	51
High engine idle speed . . . . .	20	Underground body without wear plates. . . . .	30
Hoist Cylinders kit (HC Only) . . . . .	19	Underground cab (lowered 270 mm) . . . . .	40
Hydraulic controlled by lever . . . . .	17	Universal key . . . . .	40
Hydraulic controlled by switch . . . . .	17	Warning beacon, LED. . . . .	27
Hydraulic fluid, biodegradable . . . . .	47	Warning triangle. . . . .	11
Hydraulic fluid, hot climate . . . . .	47	Wear plates, 450 HB, 8 mm . . . . .	31
Hydraulics Load Sensing 25 MPa (HC only) . . . . .	48	Wear plates, heavy duty. . . . .	31
Hydraulics Open Center 25 MPa (HC only). . . . .	48	Wheel blocks. . . . .	52
Hydraulics Open Center 32,5 MPa (HC only) . . . . .	48	Work lights . . . . .	25
Jump start connector, NATO-type. . . . .	28	Work lights, LED . . . . .	25
License plate bracket (illuminated). . . . .	9		
Lifting tools, wheel mounted . . . . .	55		



# Options - Availability by machine

Options	A25G	A30G	A35G	A40G	A45G	A45GFS	A60H
A25G Twin steer	✓						
Air blow gun	✓	✓	✓	✓	✓	✓	✓
Air filter, heavy duty, EON	✓	✓	✓	✓	✓	✓	✓
Air pre-cleaner, cyclone type	✓	✓	✓	✓	✓	✓	✓
Air pre-cleaner, oil-bath type	✓	✓	✓	✓	✓	✓	✓
Air tank, ASME certified	✓	✓	✓	✓	✓	✓	✓
Anchorage, operator's manual	✓	✓	✓	✓	✓	✓	✓
Anti-theft system (pin code)	✓	✓	✓	✓	✓	✓	✓
Arctic oil kit	✓	✓	✓	✓	✓	✓	✓
Armrest	✓	✓	✓	✓	✓	✓	✓
Auto lube system for standard machine	✓	✓	✓	✓	✓	✓	✓
Auto lube system for tailgate	✓	✓	✓	✓	✓	✓	
Body exhaust heating	✓	✓	✓	✓	✓	✓	✓
Bogie Extension	✓	✓					
Bracket Adj, Fire Extinguisher	✓	✓	✓	✓	✓	✓	✓
Cab heating/ventilation timer	✓	✓	✓	✓	✓	✓	✓
Cable kit for cab electric heater 240 V	✓	✓	✓	✓	✓	✓	✓
CAN-BUS Interface	✓	✓	✓	✓	✓	✓	✓
CareTrack	✓	✓	✓	✓	✓	✓	✓
CE-conformity document (HC only)	✓	✓	✓	✓	✓	✓	✓
CE-marking	✓	✓	✓	✓	✓	✓	✓
Electrical Interface	✓	✓	✓	✓	✓	✓	✓
Emergency steering, reverse (France)	✓	✓	✓	✓	✓	✓	
Engine auto shutdown	✓	✓	✓	✓	✓	✓	✓
Engine heater	✓	✓	✓	✓	✓	✓	✓
Engine Heater, diesel fueled	✓	✓	✓	✓	✓	✓	✓
Engine shutdown timer	✓	✓	✓	✓	✓	✓	✓
Entrance light	✓	✓	✓	✓	✓	✓	✓
External emergency engine stop	✓	✓	✓	✓	✓	✓	✓
Fast fueling system	✓	✓	✓	✓	✓	✓	✓
Fire extinguisher	✓	✓	✓	✓	✓	✓	✓
Fire Suppression System	✓	✓	✓	✓	✓	✓	✓
Frame extension	✓	✓	✓	✓	✓		
Front protection, rubber	✓	✓					
Front spillguard, extra	✓	✓	✓	✓	✓	✓	✓
Fuel filter, extra	✓	✓	✓	✓	✓	✓	✓
Fuel heater	✓	✓	✓	✓	✓	✓	✓
Haul Assist	✓	✓	✓	✓	✓	✓	✓
Hauler Chassis (without body)	✓	✓	✓	✓	✓	✓	✓
Head restraint	✓	✓	✓	✓	✓	✓	✓
Headlights	✓	✓	✓	✓	✓	✓	✓
HEPA cab filter (asbestos dust protection filter)	✓	✓	✓	✓	✓	✓	✓
High engine idle speed	✓	✓	✓	✓	✓	✓	✓
Hoist Cylinders kit (HC Only)	✓	✓	✓	✓	✓	✓	✓
Hydraulic controlled by lever	✓	✓	✓	✓	✓	✓	
Hydraulic controlled by switch	✓	✓	✓	✓	✓	✓	
Hydraulic fluid, biodegradable	✓	✓	✓	✓	✓	✓	✓
Hydraulic fluid, hot climate	✓	✓	✓	✓	✓	✓	✓
Hydraulics Load Sensing 25 MPa (HC only)	✓	✓	✓	✓	✓	✓	
Hydraulics Open Center 25 MPa (HC only)	✓	✓	✓	✓	✓	✓	
Hydraulics Open Center 32,5 MPa (HC only)	✓	✓					
Jump start connector, NATO-type	✓	✓	✓	✓	✓	✓	✓
License plate bracket (illuminated)	✓	✓	✓	✓	✓	✓	✓
Lifting tools, wheel mounted	✓	✓	✓	✓	✓	✓	✓
Long haul kit			✓	✓	✓	✓	
Lubricating hoses Ground Level Greasing	✓	✓	✓	✓	✓	✓	
Lubricating hoses Ground Level Greasing for tailgate	✓	✓	✓	✓	✓	✓	
Mudflaps and mudguard wideners, front of bogie	✓	✓	✓	✓	✓	✓	✓
No Auxiliary Hydraulics (HC only)	✓	✓	✓	✓	✓	✓	
Noise reduction kit (fulfils 2000/14/EC)	✓	✓	✓	✓	✓	✓	✓

Options	A25G	A30G	A35G	A40G	A45G	A45GFS	A60H
On Board Weighing (OBW)	✓	✓	✓	✓	✓	✓	✓
Operator seats	✓	✓	✓	✓	✓	✓	✓
PDS Communication Interface (Proximity Detection System)	✓	✓	✓	✓	✓	✓	✓
Radio installation kit	✓	✓	✓	✓	✓	✓	✓
Radio with Bluetooth/USB/AUX	✓	✓	✓	✓	✓	✓	✓
Rear mudflaps, front of bogie	✓	✓	✓	✓	✓	✓	✓
Rear view mirrors, adjustable electrically heated	✓	✓	✓	✓	✓	✓	✓
Rear vision system	✓	✓	✓	✓	✓	✓	✓
Rear windscreen wiper and washer	✓	✓	✓	✓	✓	✓	
Reflector kit	✓	✓	✓	✓	✓	✓	✓
Reverse alarm	✓	✓	✓	✓	✓	✓	✓
Reverse alarm, white noise	✓	✓	✓	✓	✓	✓	✓
Safety kit (first aid kit and fire extinguisher)	✓	✓	✓	✓	✓	✓	✓
Seat belt indicator, external	✓	✓	✓	✓	✓	✓	✓
Seat belt indicator, external	✓	✓	✓	✓	✓	✓	✓
Seat belt XXL, non retractable	✓	✓	✓	✓	✓	✓	✓
Siberian kit -40 degrees C	✓	✓	✓	✓	✓	✓	✓
Side extension, 200 mm	✓	✓	✓	✓	✓	✓	
Side extension, light material	✓	✓	✓	✓	✓	✓	✓
Sign 30 km/h	✓	✓	✓	✓	✓	✓	✓
Sign 50 km/h	✓	✓	✓	✓	✓	✓	✓
SMV sign (Slow moving vehicle)	✓	✓	✓	✓	✓	✓	✓
Speed limiter, 25 km/h	✓	✓	✓	✓	✓	✓	✓
Speed limiter, 30 km/h	✓	✓	✓	✓	✓	✓	✓
Standard body without wear plates	✓	✓	✓	✓	✓	✓	✓
Sun blinds, side windows	✓	✓	✓	✓	✓	✓	✓
Tailgate overhung, linkage-operated	✓	✓	✓	✓	✓	✓	
Tailgate, overhung, wire-operated	✓	✓	✓	✓	✓	✓	✓
Tailgate, underhung	✓	✓	✓	✓	✓	✓	
Tire classes	✓	✓	✓	✓	✓	✓	✓
Tire maintenance	✓	✓	✓	✓	✓	✓	✓
Tire Pressure Monitoring System (TPMS)	✓	✓	✓	✓	✓	✓	✓
Tires	✓	✓	✓	✓	✓	✓	✓
Tool kit	✓	✓	✓	✓	✓	✓	✓
Towing hitch	✓	✓					
Transport rust protection R2	✓	✓	✓	✓	✓	✓	✓
Transport sealing	✓	✓	✓	✓	✓	✓	✓
Twin steer body	✓						
Underground body without wear plates	✓	✓	✓	✓	✓		
Underground cab (lowered 270 mm)	✓	✓	✓	✓	✓	✓	
Universal key	✓	✓	✓	✓	✓	✓	✓
Warning beacon, LED	✓	✓	✓	✓	✓	✓	✓
Warning triangle	✓	✓	✓	✓	✓	✓	✓
Wear plates, 450 HB, 8 mm	✓	✓	✓	✓	✓	✓	✓
Wear plates, heavy duty	✓	✓	✓	✓	✓	✓	
Wheel blocks	✓	✓	✓	✓	✓	✓	✓
Work lights	✓	✓	✓	✓	✓	✓	✓
Work lights, LED	✓	✓	✓	✓	✓	✓	✓

# General



## CE-marking

Available for A25G, A30G, A35G, A40G, A45G, A45GFS, A60H AH81010

Decal and certificate that certifies the machine according to the European Community Machine Directive (98/37/EEC). The document "EC DECLARATION OF CONFORMITY FOR MACHINERY" as well as "EC Declaration regarding sound" are legally required when delivered to an EU member country.  
The decal is fitted to the PIN plate.

Remark: Must be combined with Noise reduction kit option (AH81011).



## CE-conformity document (HC only)

Available for A25G, A30G, A35G, A40G, A45G, A45GFS, A60H AH81024

The partly completed machines (Hauler Chassis), delivered by Volvo CE to the Body Builder companies/dealers/distributors cannot be CE-marked. As a guarantee that all requirements needed for CE-marking are met, the appropriate Declaration of Conformity can be supplied together with the Hauler Chassis.

Before putting into operation, the complete transport solution vehicle (Hauler Chassis and superstructure together) should be CE-marked by the Body Builder and the appropriate EU Declaration of Conformity must be issued.

Remark: the Declaration of Conformity and CE-marking are legally required only for machines marketed within the EU/EEA Region.



### Noise reduction kit (fulfils 2000/14/EC)

Available for A25G, A30G, A35G, A40G, A45G, A45GFS, A60H

AH81011

The kit is designed to primarily lower the external noise on the machines, but also has a positive effect on the internal noise. The kit consists of a noise absorbing shield under the engine hood. When working close to urban areas, there is a strong demand for lowering noise, especially during night operation.

To fulfil the EU noise directive 2000/14/EC with supplement 2005/88/EC, noise reduction kit is required.

Volvo articulated haulers have the following external sound levels according to ISO 6395:

	dB(A)
A25G	110
A30G	111
A35G	112
A40G	112
A45G	112
A45GFS	112
A60H	113

Machines, equipped with noise reduction kit have the following external sound levels according to ISO 6395:

	dB(A)
A25G	108
A30G	109
A35G	110
A40G	110
A45G	110
A45GFS	110
A60H	111

Volvo articulated haulers have the following internal sound levels in the cab according to ISO 6396:

	dB(A)
A25G	72
A30G	72
A35G	72
A40G	72
A45G	72
A45GFS	72
A60H	72

Machines, equipped with noise reduction kit have the following internal sound levels in the cab according to ISO 6395:

	dB(A)
A25G	70
A30G	70
A35G	70
A40G	70
A45G	70
A45GFS	70
A60H	70



### License plate bracket (illuminated)

Available for A25G, A30G, A35G, A40G, A45G, A45GFS, A60H

AH81002

In order to satisfy governmental requirements in certain markets, an illuminated license plate bracket is available for the machines.




---

#### Reflector kit

---

Available for A25G, A30G, A35G, A40G, A45G, A45GFS, A60H

AH81004

Consists of additional reflectors, positioned to fulfill national road regulations.




---

#### Emergency steering, reverse (France)

---

Available for A25G, A30G, A35G, A40G, A45G, A45GFS

AH81014

Secondary back-up steering is standard. It is powered via a ground dependent pump, mounted on the dropbox and works in parallel with the engine driven pumps when the hauler is moving forward.

To fulfill local requirements (France) this function must also be working when hauler is moving backwards.

Standard pump is therefore replaced and via additional valve block the oil to steering system is provided in both directions.




---

#### Air tank, ASME certified

---

Available for A25G, A30G, A35G, A40G, A45G, A45GFS, A60H

AH81018

Air tanks designed and constructed in accordance with the ASME (American Society of Mechanical Engineers) standard for pressure vessels.

Required by law in e.g. British Columbia.




---

#### SMV sign (Slow moving vehicle)

---

Available for A25G, A30G, A35G, A40G, A45G, A45GFS, A60H

AH81008

Warns traffic of vehicles moving slower than 30 or 40 km/h (depending on national road requirements).

Required by law in many countries when driving up to 30 or 40 km/h on public roads.




---

**Sign 30 km/h**

---

Available for A25G, A30G, A35G, A40G, A45G, A45GFS, A60H

AH81007

The sign is to indicate traffic that the machine is traveling with maximum speed of 30 km/h.




---

**Sign 50 km/h**

---

Available for A25G, A30G, A35G, A40G, A45G, A45GFS, A60H

AH81006

The sign is to indicate traffic that the machine is traveling with maximum speed of 50 km/h.




---

**Warning triangle**

---

Available for A25G, A30G, A35G, A40G, A45G, A45GFS, A60H

AH81009

Warning triangle used to indicate a hazard ahead on the road.




---

### On Board Weighing (OBW)

---

Available for A25G, A30G, A35G, A40G, A45G, A45GFS, A60H

AH81030

Volvo designed system to measure transported loads. The system provides customers with the ideal solution to monitor machine productivity. OBW is fully automatic without the need of human intervention.

When loading; the loading unit gets information via the load indicator lights, mounted on the outside of the machine, to reach nominal load as well as to warn for overload. Three different indications are shown depending on how much the hauler has been loaded:

- **Yellow:** Partly loaded (75% - 95% loaded).
- **Green:** Nominally loaded (95% - 110% loaded).
- **Red:** Overloaded (110% + loaded).

The load indication lights are also visible for the hauler operator as well as the actual load, in tons, presented on the Contronics display. The system measures the load during the whole machine cycle. This gives higher accuracy and makes it possible to detect carry-back.

Transported loads are logged in the machine and can be seen on the Contronics display together with number of cycles. Load data can also be accessed remotely via CareTrack, Volvo's telematics system. This provides complete payload management with a modern and user-friendly interface.

#### Accuracy

The systems are accurate within  $\pm 5\%$  of rated payload when loading. Due to the continuous measuring, the accuracy over the production cycle is within  $\pm 2\%$  of rated payload and  $\pm 1\%$  for A45GFS.

#### Value added

Using OBW will help you take control over your payload. Overloads will increase machine and tire wear. Not overloading will generate better uptime and lower service costs. Optimized payload, without carry-back, maximizes your productivity and fuel efficiency.

#### After-market option

This option is available as an aftermarket option for both E- and F-series full suspension haulers.

#### Note:

A60H (Standard): The system is using the pressure sensors from the hydraulic suspension and load cells mounted between two of the rubber springs and bogie beams, to get information of payload into the load weighing software.

---

### On Board Weighing (OBW)

---

Available for A25G, A30G, A35G, A40G, A45G

The system is using load cells mounted between two of the rubber springs and the bogie beams, to get information about payload into the load weighing software. The load cells are cross-mounted, which means the load is measured on both bogie axles. All electrical cables are well sealed, preventing moist and dirt to interfere with the system.

---

### On Board Weighing (OBW)

---

Available for A45GFS

The system is using the pressure sensors from the full suspension hydraulics to get information of payload into the load weighing software. The system is using all pressure sensors, including the once on the tractor unit, increasing the accuracy of the load weighing system.

---

## Haul Assist

---

Available for A25G, A30G, A35G, A40G, A45G, A45GFS, A60H

---

The intuitive Haul Assist system monitors the amount of material moved, providing useful data and real-time insights on the articulated hauler's productivity.



### *Haul Assist, OBW*

Available for A25G, A30G, A35G, A40G, A45G, A45GFS, A60H

AH50016

Haul Assist OBW promotes the optimal payload for reduced fuel consumption and wear. The operator can monitor all relevant information through the Volvo Co-Pilot (10") touch screen. In combination with the rear vision system, the Co-Pilot will automatically show the camera view. On Board Weighing offers improved reporting capabilities with detailed productivity information, generated in a simple and easy-to-read format.

#### **Technology**

Using the Volvo Co-Pilot, 10" heavy duty display, located in the cab, the operator can receive important information to enhance productivity and efficiency. Today it features a wide range of value adding functionalities, such as:

- Integrated rear vision system
- Wireless communication via integrated 3G modem
- Data storage and remote reporting
- Split screen view
- Day and night mode

#### **Value added**

Easy to use operator interface with the Volvo Co-Pilot. Digitalized productivity reporting – both on-board & off-board, which supports performance assessments and decision-making for operational improvements.

#### **Aftermarket option**

This option is available as an aftermarket option.



### *Haul Assist, MAP*

Available for A25G, A30G, A35G, A40G, A45G, A45GFS, A60H

AH50018

Haul Assist is supplemented with the new application Map that introduces machine-to-machine communication to Volvo articulated haulers.

Haul Assist Map enables hauler operators to see the location and movement of other (Volvo) haulers in real time on site.

Using the easy and intuitive map editor function, the operator can easily define a complete site, including haul roads, load & dump zones, speed restricted zones, reference points, and more, which is then easily shared to other Volvo haulers on site. By defining different areas on the site, such as single lane sections, speed restricted zones or dump zones, triggers can alert the operator in different situations. Such a situation could be when entering a single lane section that is already occupied by another Volvo hauler, or if the operator accidentally tries to dump material in the wrong dump zone.

Haul Assist Map works in combination with Haul Assist On-Board Weighing and offers improved reporting capabilities. The off-board element of Haul Assist Map complements the reporting from On-Board weighing, for example with geographical coordinates for each load and dump cycle.

#### **Technology**

Using the Volvo Co-Pilot in combination with the machine's built-in GPS for positioning and 3G for communication purposes, haulers can now communicate real-time positions to each other. Please note that each machine equipped with Haul Assist Map needs to have a 3G SIM-card installed in the Co-Pilot in order to use the features of the software application. Additionally, there needs to be adequate 3G connectivity at the worksite where the machines are operating.

#### **Value added**

Real-time positioning of haulers on site reduces idle time, queuing time and/or unnecessary stops along the routes. Being able to follow the transportation flow in a work cycle means better ability to plan ahead and more efficient (eco) driving. Speed limit notifications help reminding operators to keep a safe speed on site.

#### **Aftermarket option**

This option is available as an aftermarket option.



### Siberian kit -40 degrees C

Available for A25G, A30G, A35G, A40G, A45G, A45GFS, A60H

AH81016

Improves machine's operating capacity, ensuring better performance and uptime at extremely low ambient temperatures.

Consists of:

- 230 V AC socket/connections to AC-DC converter and immersion heaters for engine coolant, brakes cooling oil, hydraulic oil,
- engine coolant immersion electric heater, 230 V AC,
- hydraulic oil tank immersion electric heater, 230 V AC,
- wet disc brakes cooling oil tank immersion electric heater, 230 V AC,
- batteries electric heater, 24 V DC,
- fuel filter with water separator electric heater, 24 V DC,
- batteries electric charger, 24 V DC,
- batteries cover shields for cold insulation,
- two covering plates for engine cooler (radiator),
- coolant hoses cold insulation covers between the engine compartment and the cab,
- front grill and hood air-intake covering plates.

Remarks: Only available for low-regulated machines.



### Tire Pressure Monitoring System (TPMS)

Available for A25G, A30G, A35G, A40G, A45G, A45GFS, A60H

AH50021

The Tire Pressure Monitoring System (TPMS) app in Haul Assist provides important tire data, pressure, and temperature for each tire.

The data is shown visually in the Co-Pilot display and the system can be configured to warn the operator of low/high pressure and high temperature for individual tires. This helps the operator maintain optimal tire life.

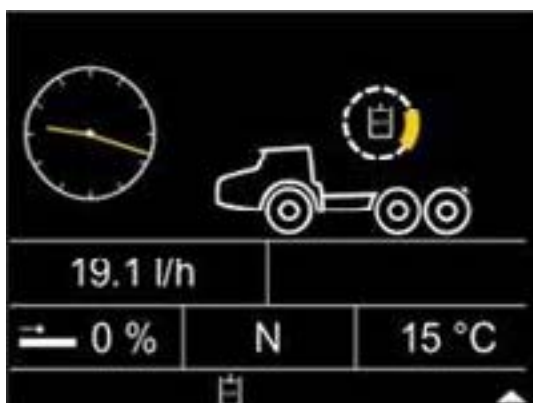
When tire pressure is not optimal, the tire life is reduced. Fuel consumption is also affected, especially with underinflated tires.

Using the TPMS will lower the total cost of ownership, result in fewer tire failures, best performance, and lowest fuel consumption.

The TPMS comes with hardware consisting of a Volvo branded transceiver installed in the cab and six tire valve sensors.

The sensors and the transceiver are heavy-duty and able to withstand the tough environments that articulated haulers face. The rims have been updated with higher plates to better protect the new valves and TPMS sensors, without affecting access to the wheel nuts. The new rims will become standard for all new Volvo Articulated Haulers, even if TPMS is not ordered.

# Hauler Chassis and body building



## Hauler Chassis (without body)

Available for A25G, A30G, A35G, A40G, A45G, A45GFS, A60H

AH82003

Selecting Hauler Chassis (without body), it comes with a basic kit including rear lights and covers for the hoist cylinder brackets. Body builder can later decide location and suitable rear lights for the decided bodybuilding.

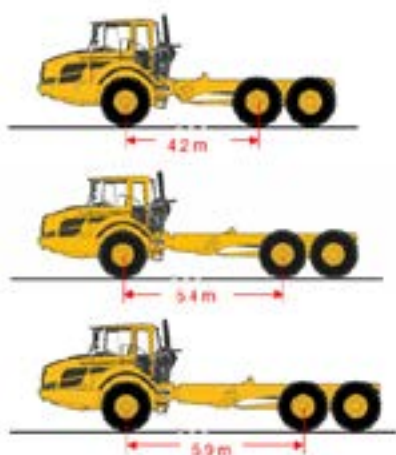
Rear lights are same as the ones mounted on a standard articulated hauler and can be reused.

The machine still features a standard tipping lever in the cab, but the tipping functionality is deactivated and all hydraulic options must be ordered separately. Using hydraulic options it will be visible in display, see Contronics picture.

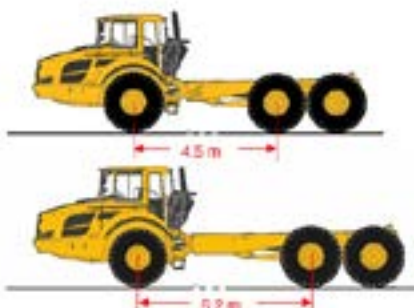
The hydraulic interface for superstructures is a standard connective block mounted on the front part of the rear frame, so no modifications will be required. The hydraulic pressure and flow is equal to a standard articulated hauler.

The detailed instructions can be found on the BBI portal.

A25G-A30G



A35G-A40G-A45G



A60H





## Frame extension

Available for A25G, A30G, A35G, A40G, A45G

The bolted frame extension modules are used to extend the length of the rear frame e.g. when building a water truck or a lube truck. There are two alternatives available – 1,2 m (3'11") and 1,7 m (5'7") long.

The bolt-on design makes it possible to easy convert back to a standard articulated hauler with dump body. This ensures flexibility and higher resale value of the machine.

The name of the chassis tells the distance between first and second axle. Example: HC54 is 5.4 meters.

### Technical restrictions

- Cannot be combined with other body options.
- The gross machine weight of the standard machines should not be exceeded when building on extended frames, please see specifications for each model for more details about machine weights.

Available as aftermarket option.

### Frame extension, bolted 1,2 m HC54 (HC only)

Available for A25G, A30G

AH85001

### Frame extension, bolted 1,7 m HC59 (HC only)

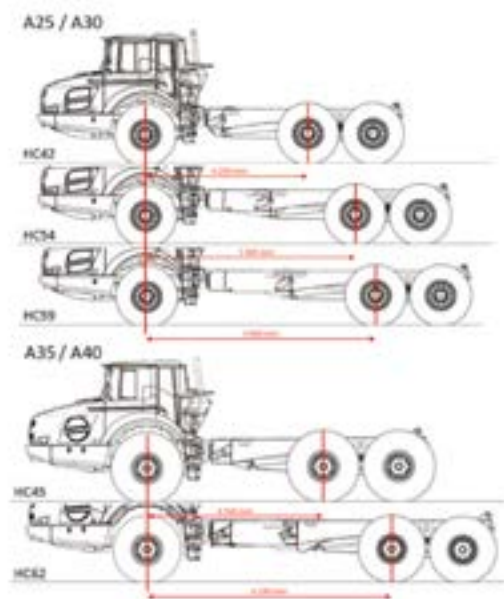
Available for A25G, A30G

AH85002

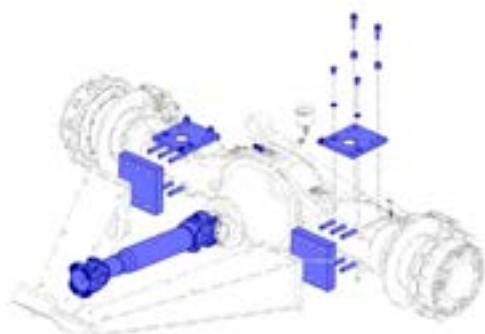
### Frame extension, bolted 1,7 m HC62 (HC only)

Available for A35G, A40G, A45G

AH85003



	A25G	A30G	A35G	A40G	A45G	A60H
No extension	HC42	HC42	HC45	HC45	HC45	HC50
1,2 m	HC54	HC54	-	-	-	
1,7 m	HC59	HC59	HC62	HC62	HC62	



## Bogie Extension

Available for A25G, A30G

AH81029

Contains a bolt on kit to extend the distance between the bogie axles. Replaces the final cardan shaft with a longer shaft. When equipped this will increase the bogie distance by 50 mm (2 in) which makes it possible to operate with chains on the tires.

Remark: installing snow chains reduces the clearance between the bogie wheels. Snow chains can only be installed if 23.5R25 are fitted to the machine. When equipping snow chains please see Operator's Manual for more information.

---

### Hydraulic controlled by lever

---

Available for A25G, A30G, A35G, A40G, A45G, A45GFS

AH61007

Hydraulics controlled by lever has the tip functionality disabled and the hauler chassis hydraulic option function enabled. The hydraulics is double acting.

For more information, please see Body Builder Instructions.

---

### Hydraulic controlled by switch

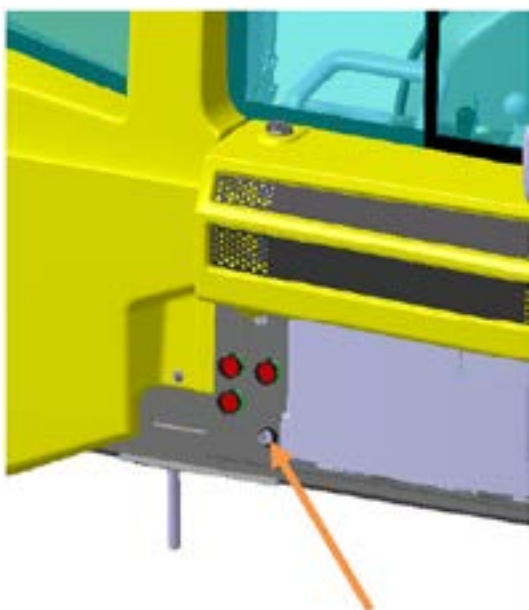
---

Available for A25G, A30G, A35G, A40G, A45G, A45GFS

AH61006

Hydraulics controlled by switch has the tip functionality disabled and the hauler chassis hydraulic option function enabled. The hydraulics is double acting.

For more information, please see Body Builder Instructions.



---

### CAN-BUS Interface

---

Available for A25G, A30G, A35G, A40G, A45G, A45GFS, A60H

AH50013

The option contains a connector positioned close to the cab air filter and a CAN-BUS interface positioned by the electrical distribution box in the cab. The CAN-BUS interface gives a Body Builder the possibility to get certain information communicated from the machine, this communication is one-way only.

#### Configuration:

A Techtool level 2 parameter controls if and what information should be communicated thru the interface:

##### 1. Basic Information

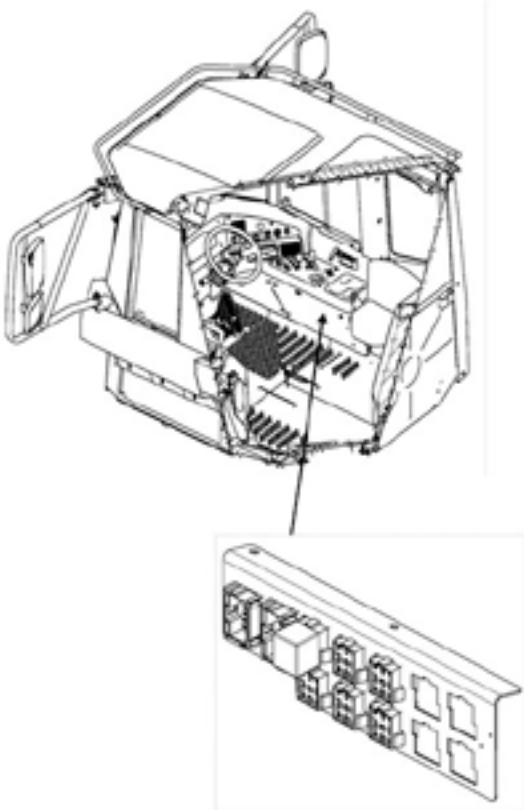
If the parameter is set to 1, Basic Information, the following information will be available thru the CAN-BUS Interface:

- Engine revolutions, rpm
- Parking brake, applied/not applied
- Machine speed, km/h

##### 2. Body builder and OEM Information

If the parameter is set to 2, Hauler body builder and OEM information, the following information will be available thru the CAN-BUS Interface:

- Engine revolutions, rpm
- Parking brake, applied/not applied
- Machine speed, km/h
- Ambient temperature, °C
- Yellow alarm, active/inactive
- Red alarm, active/inactive
- Engine load, %
- Fuel level, %
- Machine hours, h
- Actual fuel consumption, L/h



### Electrical Interface

Available for A25G, A30G, A35G, A40G, A45G, A45GFS, A60H

AH50009

This electric interface simplifies fitting of different Volvo options or other options mounted by the Body Builder. It is located under the right hand side panel in the cab.

The connector bracket is also prepared for additional connectors, relays and fuse holder that can be useful for Body Builders.

Remark: Can also be used on standard machines.

For more details, please see Body Builder Instructions.

### PDS Communication Interface (Proximity Detection System)

Available for A25G, A30G, A35G, A40G, A45G, A45GFS, A60H

AH50020

To enhance the safety feature requirement on mining and quarry equipment, Volvo and Hexagon combined their development expertise to integrate HxGN MineProtect Vehicle Intervention System (VIS) on all the Volvo G/ H- series Articulated Hauler. Volvo has developed an interface to install Hexagon Mineprotect (HxGN) systems on Volvo Articulated Haulers.

#### About Hexagon and HxGN MineProtect

Hexagon Mining is an authorized Special Application Solutions Partner for Volvo Construction Equipment. For more information about Hexagon, see PMI\_SAS\_100221\_A\_Hexagon\_All available in Volvo Construction Equipment Media Library.

Hexagon is a global company represented in many countries all over the world. Volvo and Hexagon together evaluate market introduction.

If both agree we start up activities to plan and launch requested system in respective country/region.

Launched in South Africa 2021.

For new market introduction request, please contact your regional sales support.

#### HxGN MineProtect Collision Avoidance System (CAS)

Collision Avoidance System (CAS) provides 360-degree proximity detection via a non-intrusive cabin display unit for all vehicles or assets fitted with the system in open pit mines, quarries or construction sites. Built on more than a decade's experience with over 40,000 units worldwide, CAS constitutes the base of the system providing vehicle to vehicle detection, which can be enhanced with Tracking Radar for vehicle to obstacle, Personal Alert for vehicle to pedestrians, Operator Alertness for people to vehicle and Vehicle Intervention solutions.

#### HxGN MineProtect Vehicle Intervention System (VIS)

HxGN MineProtect Vehicle Intervention System (VIS) detects and prevents collisions by automatically slowing down or even stopping a vehicle if an imminent collision is detected. It is an additional layer of safety to HxGN MineProtect Collision Avoidance System (CAS). VIS can take control of the machine in defined situations if the operator does not react appropriately to the initial CAS warning. Depending on the situation, VIS can inhibit propulsion, activate the retarder, or apply the service brake.



---

#### Hoist Cylinders kit (HC Only)

---

Available for A25G, A30G, A35G, A40G, A45G,  
A45GFS, A60H

AH80035

---

Hoist cylinders kit (incl hoist cylinders, body angle sensor, dump body lock, hydraulic pipes and hoses) to facilitate the use of the Hauler chassis with other types of dump bodies or container frames. This option can only be ordered for a Hauler chassis, a machine without a dump body. With genuine Volvo Parts, you get the benefit of secure performance and spare parts availability.

# Engine



---

## Air filter, heavy duty, EON

---

Available for A25G, A30G, A35G, A40G, A45G, A45GFS, A60H

AH31005

A primary engine air filter with improved cleaning ability using nanofiber technology. This filter protects the engine from dust from the first use, whereas a standard filter needs running in time to have full cleaning capability. Increases functional reliability in extremely dusty conditions. The filter has a self-cleaning design that extends the service intervals. There is no service required between replacements of the filter, just let it run until the display indicates "Engine air filter clogged".



---

## High engine idle speed

---

Available for A25G, A30G, A35G, A40G, A45G, A45GFS, A60H

AH31007

Activates the engine high idle speed with a switch on the instrument panel. The idle speed is set via the operator communication system (Contronics).

Used when extra equipment, powered by the engine PTO is mounted (e.g. hooklift, winch, etc.) and for facilitating faster engine warm-up in cold climate conditions. Only usable with transmission in Neutral position.



---

## External emergency engine stop

---

Available for A25G, A30G, A35G, A40G, A45G, A45GFS, A60H

AH31001

External engine stop, easily accessed, mounted on the left fender. To facilitate quick engine shut-down in case of emergency.




---

### Engine heater

---

Available for A25G, A30G, A35G, A40G, A45G, A45GFS, A60H

Engine block coolant immersion electric heater facilitates starting at cold climate conditions, reduces wear of the engine, fuel consumption and exhaust emissions.

Requires external electric AC power supply.

The option includes electric heater for wet disc brakes cooling oil. Recommended for ambient temperatures -15° C or below.

---

### *Engine heater, electric 240 V*

---

Available for A25G, A30G, A35G, A40G, A45G, A45GFS, A60H

AH31008




---

### Cable kit for cab electric heater 240 V

---

Available for A25G, A30G, A35G, A40G, A45G, A45GFS, A60H

AH41014

The option includes inlet AC socket, connecting cable and outlet AC socket in the cab for portable electric heater (not supplied by Volvo). Used to warm up the operator environment when the machine is not operating (e.g. parked during the night). Requires external electric AC power supply.




---

### Engine shutdown timer

---

Available for A25G, A30G, A35G, A40G, A45G, A45GFS, A60H

AH31006

Delayed engine shut-down, easily activated with a switch on the instrument panel. The delay timer is set via Tech Tool. When the function is activated and the ignition key is turned to the OFF position, the engine runs during the selected time (pre-set to 3 minutes) and then shuts down. This gives the turbocharger time to cool down, ensuring lubrication.

This equipment is standard on Tier 4 and Stage V machines and optional on other markets.




---

#### Air pre-cleaner, cyclone type

---

Available for A25G, A30G, A35G, A40G, A45G, A45GFS, A60H

AH31010

Engine air pre-cleaner for use in dusty conditions. The engine air pre-cleaner is an excellent way to reduce down time and maintenance cost in environments with a lot of debris in the air. The system is designed to catch large particles prior to entry into the air filter. This increases the lifetime of the standard air filter.

Remark: Only available for low-regulated machines.




---

#### Air pre-cleaner, oil-bath type

---

Available for A25G, A30G, A35G, A40G, A45G, A45GFS, A60H

AH31012

When working in extremely dusty environments, an extra oil-bath air pre-cleaner is recommended to be installed in series with the existing dry filter air cleaner.

The oil captures the particles and needs to be replaced when saturated. This option adds more oil to the service schedule and can potentially increase the maintenance cost.

Remark: Only available for low-regulated machines.

---

#### Engine Heater, diesel fueled

---

Available for A25G, A30G, A35G, A40G, A45G, A45GFS, A60H

AH31017

Used when the machine is not operating (e.g. parked during the night) to make it easier to start the engine at low ambient temperatures by pre-heating the engine, as well as keeping a comfortable warmth in the cab. This also increases the lifetime of the engine.

The 12kW burner is fueled with diesel from the machine's fuel tank.

There are six different heating modes; they are automatically chosen by the system depending on the engine coolant's current temperature. When the coolant temperature reaches operating temperature, the heating will be turned off.

The heater unit works independently from the ignition key and main switch.

The control/timer for the heater is mounted in the cab and conveniently positioned on the left-hand side of the instrument panel, see picture 1. The heater is programmable by the operator:

- Switch on/switch off the heating.
- Set/change heating duration.
- Program (pre-select) several starting times for heating.
- Activate heating directly.

Detailed operating instructions for the control unit (timer), including programming and fault diagnostics, with description of error codes, can be found in the Operator's Manual.

#### Additional functionality

With additional parts, not sold by Volvo, you can complement the system for remote control via GSM/3G. Please contact your local Eberspächer representative for offering and detailed information on remote control.




---

#### Fuel filter, extra

---

Available for A25G, A30G, A35G, A40G, A45G, A45GFS, A60H

AH31011

Acts as a pre-filter, securing the engine performance and prolonging its lifetime when diesel contains a high percentage of water or other contaminations. Mounted between the fuel tank and the standard fuel filter. Features the exchangeable filter element and a large water container with the easy accessed drain valve in the bottom.

Remarks: Only available for T2 and T3 engines.

The option is also available as an aftermarket kit.

---

#### Fuel heater

---

Available for A25G, A30G, A35G, A40G, A45G, A45GFS, A60H

AH31018

The fuel heater, found in the Siberian Kit, has been made available as a separate option. The heater gives the exact same effect and benefits as the one from said kit. The heater is ignition key dependent, but is activated with a thermostat that opens if the temperature is below 7,2 °C (45 °F). When temperature reaches 29,4 °C (85 °F) the heater de-activates. The fuse to the heater can be removed to prevent accidental use during times with temperatures above freezing.




---

#### Fast fueling system

---

Available for A25G, A30G, A35G, A40G, A45G, A45GFS, A60H

AH31004

A non-pressurized fast fuelling system that helps to reduce downtime when re-fuelling the machine.

The fuelling nozzle is installed in front of the fuel tank and accessible through the grill (A60H: on the side of the tank), fuel enters the tank through a shut-off valve, when the tank is full the vent/float assembly sends a signal to the shut off valve to close. Once the shut-off valve is closed, it cannot be forced open and inadvertent overfilling is eliminated.

The fast fuelling system can take diesel fuel fill rates up to 570 liters per minute (150 gallons per minute). The system is Wiggins compatible.



---

**Speed limiter, 25 km/h**

---

Available for A25G, A30G, A35G, A40G, A45G,  
A45GFS, A60H

AH38001

The machine is equipped with electronic speed limitation set to 25 km/h (16 mph). This option fulfils legal requirements for permanent speed restriction, as it is hard coded into the machine and cannot be removed with Techtool.



---

**Speed limiter, 30 km/h**

---

Available for A25G, A30G, A35G, A40G, A45G,  
A45GFS, A60H

AH38002

The machine is equipped with electronic speed limitation set to 30 km/h (19 mph). This option fulfils legal requirements for permanent speed restriction, as it is hard coded into the machine and cannot be removed with Techtool.

# Electrics



---

## Work lights

---

Available for A25G, A30G, A35G, A40G, A45G, A45GFS, A60H

AH51014

Contains four halogen lights; two mounted on the cab fenders, facing rear, and two lights mounted on the top front corners of the cab. All lights are well protected.

### Functionality

Two 3-position switches will be installed in the cab on machines ordered with work lights, one controlling the front work lights and one controlling the rear work lights.

### Front work light settings:

- Position 1: Front work lights forced off.
- Position 2: Front work lights in automatic mode. In automatic mode the work lights will be controlled by the full beam lever. Activating full beam will activate the work lights.
- Position 3: Front work lights forced on.

### Rear work light settings:

- Position 1: Rear work lights forced off.
- Position 2: Rear work lights in automatic mode. The automatic mode is controlled by two settings in the contronics. Two different settings are available; rear work lights on/off when reverse gear is engaged and if Load & Dump on/off.
- Position 3: Rear work lights forced on.



---

## Work lights, LED

---

Available for A25G, A30G, A35G, A40G, A45G, A45GFS, A60H

AH51008

State-of-the-art alternative to the halogen work lights. The option includes four LED lights mounted on the top front corners of the cab and two rear facing LED lights mounted on cab fenders. Also included is one LED reverse light. The lights are set to eliminate unwanted glare and illumination of front body and hood.

LED lights provide much longer service life, compared to any other light. Customers will have more uptime with maximized productivity vs. changing out lights more frequently.



### Entrance light

Available for A25G, A30G, A35G, A40G, A45G, A45GFS, A60H

AH51009

Allows the operators to safely enter and exit the cab during dark hours. A downwards pointing halogen lamp is installed at the right side of the entry ladder. The switch is located at the left fender, accessible from ground level. The light will by default be switched on for 60 seconds. Time can be changed with Techtool. The entrance light is activated when either:

- the entrance light switch is pushed,
- or the door is opened.

The light will turn off when the machine starts moving or when Techtool time setting has passed.

When the entrance light is activated, you also get power to raise and lower the engine hood for as long as the light is shining.



### Headlights

Available for A25G, A30G, A35G, A40G, A45G, A45GFS, A60H

For maximum white light, the LED lights is a powerful feature. It gives a powerful white light that has a more daylight glow and is therefore calmer for the eye, compared to halogen light. LED also gives a more accurate color reproduction.

Optional LED lights provide much longer service life. Customers will have more uptime with maximized productivity vs. changing out lights more frequently.

### *Headlights, LED*

Available for A25G, A30G, A35G, A40G, A45G, A45GFS, A60H

AH51010

### *Headlights, LED, left-hand drive*

Available for A25G, A30G, A35G, A40G, A45G, A45GFS, A60H

AH51011

### *Headlights, halogen, left-hand drive*

Available for A25G, A30G, A35G, A40G, A45G, A45GFS, A60H

AH51003




---

#### Warning beacon, LED

---

Available for A25G, A30G, A35G, A40G, A45G, A45GFS, A60H

AH51015

Equipment consists of a LED beacon mounted on the cab roof and a switch in the cab. Increases safety for the operator and others when the machine is working close to traffic. The beacon can be lowered when not in use, decreasing the total machine height for transportation.




---

#### Seat belt indicator, external

---

Available for A25G, A30G, A35G, A40G, A45G, A45GFS, A60H

AH51013

A green light is installed on the top of the machine, close to the warning beacon. The light turns on if the operator has attached the seat belt.




---

#### Reverse alarm

---

Available for A25G, A30G, A35G, A40G, A45G, A45GFS, A60H

AH50002

Audible warning signal when reversing the machine. It is activated when reverse gear is selected. Self-adjusting sound level (Smart Alarm).




---

#### Reverse alarm, white noise

---

Available for A25G, A30G, A35G, A40G, A45G, A45GFS, A60H

AH50014

White Noise is a state-of-the-art alternative to the "Reverse Alarm AH50002" option. White Noise uses a combination of all sound frequencies and gives a less disturbing signal. The signal is also easier to locate when you hear it, compared to the current single frequency alarm. White Noise will also automatically adjust its sound volume depending on the surrounding noise level on the work site.

Remark: not possible to order together with "Reverse Alarm AH50002", as they use the same mounting bracket.




---

#### Rear vision system

---

Available for A25G, A30G, A35G, A40G, A45G, A45GFS, A60H

For safe and easy reversing. The operator can see behind the machine through a camera mounted near the body dump hinge via a color LCD monitor located in the overhead console. Cable kit is included.

Remark: standard on most markets. Camera and monitor was split into two separate options during the launch of Haul Assist.

---

#### *Rear vision system, camera*

---

Available for A25G, A30G, A35G, A40G, A45G, A45GFS, A60H

AH50003

---

#### *Rear vision system, monitor*

---

Available for A25G, A30G, A35G, A40G, A45G, A45GFS, A60H

AH50017




---

#### Jump start connector, NATO-type

---

Available for A25G, A30G, A35G, A40G, A45G, A45GFS, A60H

AH50012

A 24-volt jump start connection, NATO-type, is fitted in the battery compartment. An additional connector is delivered in the cab, to be fitted to a cable by the customer.

# Power transmission



---

## Long haul kit

---

Available for A35G, A40G, A45G, A45GFS

AH37002

---

For long and fast haul in high ambient temperatures (~6 - 10 km or more at continuous speed >35 km/h), this oil cooler for the dropbox can be installed and decreases the risk of overheating.

This feature is standard on A60H.

# Body

## Body Options Introduction

With body options, you can tailor the Volvo Articulated Hauler to suit your application and the density of material that you are hauling. You are not allowed to exceed gross machine weight, therefore payload should be reduced by the weight of the optional equipment.



### Standard body without wear plates

Available for A25G, A30G, A35G, A40G, A45G, A45GFS, A60H

AH82001

The wide, symmetrical, rib less, body is made of high impact strength Hardox HB450 (A60H: HB400) steel with heavy gauge plates. The thick plates and rugged design are suitable for all types of material – from shot rocks to wet sand or sticky clay. In extremely severe conditions, additional wear plates should be used.

	Payload		Heaped volume		Material density	
	kg	sh.ton	m³	yd³	t/m³	sh.ton/yd³
A25G	25 000	27.6	15.3	20	1.63	1.38
A30G	29 000	32	17.8	23.3	1.63	1.38
A35G	34 500	38	21.2	27.7	1.63	1.38
A40G	39 000	43	24	31.4	1.63	1.38
A45G	41 000	45.2	25	32.7	1.63	1.38
A45G FS	41 000	45.2	25	32.7	1.63	1.38
A60H	55 000	60.6	33.6	43.9	1.63	1.38

	Body weight	
	kg	lb
A25G	3 320	7,319
A30G	3 538	7,800
A35G	4 304	9,489
A40G	4 641	10,232
A45G	4 743	10,457
A45G FS	4 743	10,457
A60H	6 568	14,480

### Underground body without wear plates

Available for A25G, A30G, A35G, A40G

AH82002

A strong underground body, made of high strength Hardox HB450 quality steel with heavy gauge plates, easily withstands even impact loading. The design is the same as standard body, but with a lower spillguard.

In extremely severe condition the optional wear plates should be used.

Weight	kg	lb
A25	3 239	7,319
A30	3 450	7,800
A35	4 246	9,489
A40	4 571	9,980
A45	4 800	10,205

Plate thickness	A25G - A30G		A35G - A40G	
	mm	in	mm	in
Front	8	0.31	8	0.31
Side	10	0.39	12	0.47
Bottom	14	0.55	16	0.63
Chute	14	0.55	16	0.63





### Wear plates, 450 HB, 8 mm

Available for A25G, A30G, A35G, A40G, A45G, A45GFS, A60H

AH83001

These wear plates (rock liners) are used to extend body service life when hauling rock fill. They are made of 8 mm (0,32"), 10 mm on A60H (0,39") thick Hardox HB450 highstrength steel.

	Additional equipment weight	
	kg	lb
<b>A25G</b>	950	2,094
<b>A30G</b>	1 070	2,359
<b>A35G</b>	1 290	2,844
<b>A40G</b>	1 480	3,263
<b>A45G</b>	1 480	3,263
<b>A45G FS</b>	1 480	3,263
<b>A60H</b>	2 310	5,093



### Wear plates, heavy duty

Available for A25G, A30G, A35G, A40G, A45G, A45GFS

Adapt the body for heavy-duty operation, extending its lifetime in extreme conditions, e.g. when hauling blasted granite or other similar highly abrasive materials. When worn out, the plates can be replaced.

### Wear plates, heavy duty - low

Available for A25G, A30G, A35G, A40G, A45G, A45GFS

AH83012

Compared to AH83001, this option includes thicker plates for the bottom and the angled sides of the body, where the most of the wear is. It also includes additional wear plates to protect the upper sides. Made of high-strength Hardox HB450 steel.

	Additional equipment weight	
	kg	lb
<b>A25G</b>	1 920	4,233
<b>A30G</b>	1 920	4,233
<b>A35G</b>	2 330	5,137
<b>A40G</b>	2 570	5,666
<b>A45G</b>	2 620	5,776
<b>A45G FS</b>	2 620	5,776

	Plate thickness									
	Bottom		Chute		Front		Side, angled		Side, upper	
	mm	in	mm	in	mm	in	mm	in	mm	in
<b>A25G – A45G</b>	15	19/32	15	19/32	8	5/16	12	15/32	8	5/16

### Wear plates, heavy duty - extended

Available for A25G, A30G, A35G, A40G, A45G, A45GFS

AH83013

Compared to AH83012, this option also covers the side extensions. Made of high-tensile Hardox HB450 steel.



#### Side extension, 200 mm

Available for A25G, A30G, A35G, A40G, A45G, A45GFS

AH83003

Increases body volume to utilize max. load capacity when transporting light material. Only to be used for materials that give max. allowed load.

	Heaped volume		Material density	
	m <sup>3</sup>	yd <sup>3</sup>	t/m <sup>3</sup>	sh.ton/yd <sup>3</sup>
<b>A25G</b>	17.2	22.5	1.45	1.22
<b>A30G</b>	19.9	26	1.46	1.23
<b>A35G</b>	23.6	30.9	1.46	1.23
<b>A40G</b>	26.8	35.1	1.46	1.23
<b>A45G</b>	27.6	36.1	1.49	1.25
<b>A45G FS</b>	27.6	36.1	1.49	1.25

	Additional equipment weight	
	kg	lbs
<b>A25G</b>	330	728
<b>A30G</b>	340	750
<b>A35G</b>	370	816
<b>A40G</b>	380	838
<b>A45G</b>	380	838
<b>A45G FS</b>	380	838



#### Side extension, light material

Available for A25G, A30G, A35G, A40G, A45G, A45GFS, A60H

AH83011

Adapts the body for hauling light and medium density materials, e.g. coal. The kit bolts to the standard body without any modifications and is easily mounted or dismantled. The extensions simplify adapting the machine for hauling different materials. No drilling or welding is required.

	Heaped volume		Material density	
	m <sup>3</sup>	yd <sup>3</sup>	t/m <sup>3</sup>	sh.ton/yd <sup>3</sup>
<b>A25G</b>	26.5	34.7	0.94	0.8
<b>A30G</b>	30.7	40.2	0.94	0.8
<b>A35G</b>	37.3	48.8	0.92	0.78
<b>A40G</b>	41.3	54	0.94	0.8
<b>A45G</b>	41.3	54	0.99	0.84
<b>A45G FS</b>	41.3	54	0.99	0.84
<b>A60H</b>	57.8	75.6	0.95	0.8

	Additional body height	
	mm	in
<b>A25G</b>	720	28
<b>A30G</b>	750	30
<b>A35G</b>	820	32
<b>A40G</b>	870	34
<b>A45G</b>	800	31
<b>A45G FS</b>	800	31
<b>A60H</b>	870	34

	Additional equipment weight	
	kg	lbs
<b>A25G</b>	1 910	4,211
<b>A30G</b>	2 040	4,497
<b>A35G</b>	2 250	4,960
<b>A40G</b>	2 420	5,335
<b>A45G</b>	2 420	5,335
<b>A45G FS</b>	2 420	5,335
<b>A60H</b>	2 830	6,239



### Tailgate, overhung, wire-operated

Available for A25G, A30G, A35G, A40G, A45G, A45GFS, A60H

AH83004

Tailgate reduces spill when hauling, especially on steep grades. Designed for hauling masses with lower density, that will not exceed specified gross machine weight.

Overhung tailgates gives a scissor-like function towards the end of the body, therefore should not be used for transporting large rocks or boulders.

Available as an aftermarket option.

#### Technical restrictions

- Cannot be combined with snow chains.

	Heaped volume		Material density	
	m <sup>3</sup>	yd <sup>3</sup>	t/m <sup>3</sup>	sh.ton/yd <sup>3</sup>
<b>A25G</b>	15.9	20.8	1.57	1.33
<b>A30G</b>	18.4	24.1	1.58	1.33
<b>A35G</b>	22	28.8	1.57	1.32
<b>A40G</b>	25	32.7	1.56	1.31
<b>A45G</b>	26	34	1.58	1.33
<b>A45G FS</b>	26	34	1.58	1.33
<b>A60H</b>	35.1	45.9	1.57	1.32

	Additional equipment weight	
	kg	lb
<b>A25G</b>	920	2,028
<b>A30G</b>	920	2,028
<b>A35G</b>	1 000	2,205
<b>A40G</b>	1 000	2,205
<b>A45G</b>	1 000	2,205
<b>A45G FS</b>	1 000	2,205
<b>A60H</b>	1 330	2,932



### Tailgate overhung, linkage-operated

Available for A25G, A30G, A35G, A40G, A45G, A45GFS

AH83009

Tailgate reduces spill when hauling, especially on steep grades. Designed for hauling gravel, sand and liquid masses with a density that will not exceed specified gross machine weight. This option features unique self-locking function together with the underhung tailgate. Overhung tailgates gives a scissor-like function towards the end of the body, therefore should not be used for transporting large rocks or boulders.

Can easily be removed to use only underhung tailgate.

Available as an aftermarket option.

#### Technical restrictions

- Must be combined with "Tailgate, underhung" option (AH83008).
- A25-A30 tailgate cannot be combined with "Side extension, 200 mm" option (AH83003).
- A35-A40 must be combined with "Side extension, 200 mm" option (AH83003).

	Heaped volume		Material density	
	m <sup>3</sup>	yd <sup>3</sup>	t/m <sup>3</sup>	sh.ton/yd <sup>3</sup>
<b>A25G</b>	15.9	20.8	1.57	1.33
<b>A30G</b>	18.4	24.1	1.58	1.33
<b>A35G</b>	25	32.7	1.38	1.16
<b>A40G</b>	28.3	37	1.38	1.16
<b>A45G</b>	29.1	38.1	1.41	1.19
<b>A45G FS</b>	29.1	38.1	1.41	1.19

	Additional weight (Weights include underhung tailgate combination)	
	kg	lb
<b>A25G</b>	850	1,874
<b>A30G</b>	890	1,962
<b>A35G</b>	1 519	3,349
<b>A40G</b>	1 560	3,439
<b>A45G</b>	1 569	3,459
<b>A45G FS</b>	1 569	3,459



### Tailgate, underhung

Available for A25G, A30G, A35G, A40G, A45G, A45GFS

AH83008

Tailgate reduces spill when hauling, especially on steep grades. Linkage operated underhung tailgate features simple and reliable function. Can be used in most of applications, not reducing the dumping time or limiting type of material hauled. The design provides:

- Mechanical stop when opened to reduce stress on the mechanism.
- Compressed gas spring to prevent overload and to secure correct preload when closed.
- No maintenance required.

Available as an aftermarket option.

### Technical restrictions

- Cannot be combined with "Tailgate, overhung, wire-operated" option (AH83004).

	Heaped volume		Material density	
	m <sup>3</sup>	yd <sup>3</sup>	t/m <sup>3</sup>	sh.ton/yd <sup>3</sup>
<b>A25G</b>	15.9	20.8	1.57	1.33
<b>A30G</b>	18.4	24.1	1.58	1.33
<b>A35G</b>	21.9	28.6	1.58	1.33
<b>A40G</b>	25	32.7	1.56	1.31
<b>A45G</b>	25.8	33.7	1.59	1.34
<b>A45G FS</b>	25.8	33.7	1.59	1.34

	Additional equipment weight	
	kg	lb
<b>A25G</b>	320	705
<b>A30G</b>	330	728
<b>A35G</b>	630	1,389
<b>A40G</b>	650	1,433
<b>A45G</b>	650	1,433
<b>A45G FS</b>	650	1,433



### Front spillguard, extra

Available for A25G, A30G, A35G, A40G, A45G, A45GFS, A60H

AH83006

A 700 mm (2'4") extra high spillguard that effectively protects the hitch, hydraulic hoses and exhaust pipe by reducing spill when loading and allowing more convenient loading. This option also prevents material spill when hauling on steep downhill grades. The spillguard can be folded into the body (bolt-mounted) during transportation to reduce machine height.

Available as an aftermarket option.

	Additional equipment weight	
	kg	lb
<b>A25G</b>	170	375
<b>A30G</b>	180	397
<b>A35G</b>	200	441
<b>A40G</b>	200	441
<b>A45G</b>	200	441
<b>A45G FS</b>	200	441
<b>A60H</b>	240	529



---

### Body exhaust heating

---

Available for A25G, A30G, A35G, A40G, A45G, A45GFS, A60H

AH83005

Exhaust gases are routed over the hitch and along the inside of the dump body. This heats up the metal in the body, which reduces the risk of material freezing and/or sticking to the body. This can improve productivity over the work cycle, as carry-back of material is minimized.

The system features a valve which allows the operator to turn on and off the body heating functionality. The operator can also choose to have the body heating de-activated automatically when the reverse gear is selected or the Load & Dump brake is activated; this to make sure no exhaust gases are blocking the rear view camera. All these settings are controlled with the Contronics display.

The exhaust gases are never routed thru the body when the machine is currently regenerating. The system also deactivates when the body is raised, as exhausts can't heat the body during the dumping sequence. Fast and easy to install or remove even in the field.

# Wheels

---

## Tires

---

Available for A25G, A30G, A35G, A40G, A45G, A45GFS, A60H

---

Tires for articulated haulers are an important part of the drive train and have to perform a variety of tasks. In order to do this the tires should have different characteristics:

- Be capable of carrying the total weight
- Provide good traction and be self-cleaning
- Reject heat generated during long, high speed hauls
- Have good protection against tire cuts
- Provide a comfortable ride
- Provide low ground pressure
- Provide good stability
- Provide long service life.

---

## Rims

---

Available for A25G, A30G, A35G, A40G, A45G, A45GFS, A60H

All Volvo articulated haulers are delivered with 5 piece rims which give good durability and easy field replacement of tires. Tires can normally be replaced without taking the rim off the machine.

---

## Tires

---

Available for A25G, A30G, A35G, A40G, A45G, A45GFS, A60H

Two profile types are available:

- Standard profile (80% profile)
- Low profile (65% profile)

65% profile is wider than 80% profile but with the same diameter, suitable for applications demanding lower ground pressure or improved stability.

65% profile tires give:

1. lower ground pressure
2. improved flotation
3. increased stability
4. long tread life
5. better comfort

---

## Tire classes

---

Available for A25G, A30G, A35G, A40G, A45G, A45GFS, A60H

---



### *E3 tires, Optimized for soft ground applications*

---

Available for A25G, A30G, A35G, A40G, A45G, A45GFS, A60H

E3 tires have standard tread depth. General purpose tires suitable for most articulated hauler applications, e.g. earth moving:

1. good traction and self-cleaning
2. high average speeds (TKPH, TonKilometer Per Hour / TMPH, TonMiles Per Hour)
3. long tread life

Standard profile (80% profile)

#### **Available E3 types:**

1. Bridgestone VLT
2. Goodyear TL-3A+
3. Michelin XADN+
4. Michelin XTS
5. Trelleborg EMR1030

Low profile (65% profile)

#### **Available E3 types:**

1. Bridgestone VLT
2. Goodyear TL-3A+
3. Michelin XAD65-1



### *E4 tires, Optimized for hard ground applications*

---

Available for A25G, A30G, A35G, A40G, A45G, A45GFS, A60H

E4 tires have deeper tread. These are suitable for work sites with relatively well maintained haul roads and abrasive environments, e.g. gravel pits and quarries.

1. good cut protection
2. lower average speeds
3. good comfort
4. extra long tread life

E4 tires have lower TKPH, TonKilometer Per Hour (TMPH, TonMiles per hour) value than E3 tires, because the thicker rubber generates heat in high speed.

Standard profile (80% profile)

#### **Available E4 types:**

1. Bridgestone VLT-S
2. Goodyear GP4D
3. Goodyear TL-4A+
4. Michelin X-Super Terrain +
5. Michelin XTra Defend

Low profile (65% profile)

#### **Available E4 types:**

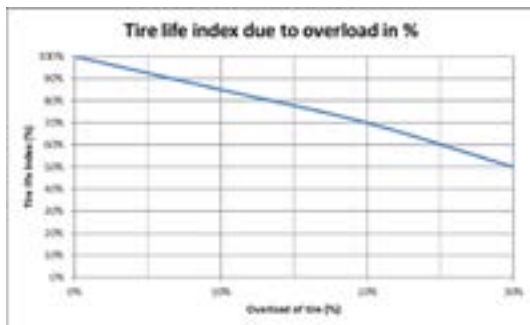
1. Goodyear GP4D
2. Bridgestone VLT-S
3. Michelin XTra Defend



## Tire maintenance

Available for A25G, A30G, A35G, A40G, A45G, A45GFS, A60H

Tire pressure and load has a major impact on tire life and cost. It is volume and pressure of air that carries the load. Under-inflation or overloading creates overheating due to increased flexing of the sidewalls. Over-inflation will also destroy the tires due to over-stress of the tire carcass. Over-inflation also causes shock damage on machine (fenders, mirrors etc.).



### Tire life based on load

Available for A25G, A30G, A35G, A40G, A45G, A45GFS, A60H

Reduction of tire life based on overload is described in the graph above.

A40G ~39,000 kg (86,000 lb)			
Bridgeport	28.5-425 R1	3.0 psi (20.7 kPa)	4.0 psi (27.6 kPa)
Bridgeport	28.5-425 R1 16	3.0 psi (20.7 kPa)	4.0 psi (27.6 kPa)
Bridgeport	28.5-425 R1 16 16	3.0 psi (20.7 kPa)	4.0 psi (27.6 kPa)
Bridgeport	28.5-425 R1 16 16 16	3.0 psi (20.7 kPa)	4.0 psi (27.6 kPa)
Bridgeport	28.5-425 R1 16 16 16 16	3.0 psi (20.7 kPa)	4.0 psi (27.6 kPa)
Bridgeport	28.5-425 R1 16 16 16 16 16	3.0 psi (20.7 kPa)	4.0 psi (27.6 kPa)
Bridgeport	28.5-425 R1 16 16 16 16 16 16	3.0 psi (20.7 kPa)	4.0 psi (27.6 kPa)
Bridgeport	28.5-425 R1 16 16 16 16 16 16 16	3.0 psi (20.7 kPa)	4.0 psi (27.6 kPa)
Bridgeport	28.5-425 R1 16 16 16 16 16 16 16 16	3.0 psi (20.7 kPa)	4.0 psi (27.6 kPa)
Bridgeport	28.5-425 R1 16 16 16 16 16 16 16 16 16	3.0 psi (20.7 kPa)	4.0 psi (27.6 kPa)



### Tire life based on inflation pressure

Available for A25G, A30G, A35G, A40G, A45G, A45GFS, A60H

Recommended tire pressures: A40G example.

The value presented on the tire pressure decal applies to a standard machine with nominal load. In other load conditions, follow recommendations from the tire supplier. Overloading will always increase wear of the machine and tires. The decal is located on left-hand side of the rear frame.




---

#### **Mudflaps and mudguard wideners, front of bogie**

---

Available for A25G, A30G, A35G, A40G, A45G, A45GFS, A60H

Reduces dirt splash on footsteps, rear cab wall and side windows when operating in off-road conditions. Made of plastic material. The ordering system will automatically select the appropriate mud flap and mudguards based on the selected machine model and tires.




---

#### **Rear mudflaps, front of bogie**

---

Available for A25G, A30G, A35G, A40G, A45G, A45GFS, A60H

Reduces dirt splash on footsteps, rear cab wall and side windows when operating in off-road conditions. Made of plastic material. The ordering system will automatically select the appropriate mud flap based on the selected machine model and tires.

# Cab/Operator environment



---

## Universal key

---

Available for A25G, A30G, A35G, A40G, A45G, A45GFS, A60H

AH41011

When ordering machines with this option, they all get the same key combination. This means that one set of keys fits your whole fleet of machines.

Remark: this is not a "Master key", it can only be used on machines ordered with this option. Some insurance companies might not approve to the use of universal key.



---

## Underground cab (lowered 270 mm)

---

Available for A25G, A30G, A35G, A40G, A45G, A45GFS

AH40001

For applications with restricted machine height, e.g. underground. Cab is 270 mm lower than standard, to decrease the machine height. The cab is ROPS and FOPS approved. (Must be combined with Operator's seat, underground).

Remark: Please consider ordering together with underground body (AH82002).

---

## Operator seats

---

Available for A25G, A30G, A35G, A40G, A45G, A45GFS, A60H



---

## KAB

---

Available for A25G, A30G, A35G, A40G, A45G, A45GFS, A60H

AH42003

- KAB 564 air suspended seat, electrically heated.
- 2-point seat belt, 3" wide with belt warning.
- Air operated weight adjustment and mechanical height adjustment.
- Adjustment for operator weight 50 – 150 kg
- Mechanical lumbar support
- Optional head restraint and foldable armrests are available



### ***Grammer, 3-point seat belt***

Available for A25G, A30G, A35G, A40G, A45G, A45GFS, A60H

AH42006

- Grammer Actimo air suspended seat, electrically heated.
- 3-point seat belt, 2" wide orange color with belt warning.
- Air operated weight adjustment and height adjustment.
- Automatic adjustment for operator weight 50 – 130 kg
- Pneumatic lumbar support
- Optional head restraint and foldable armrests are available

### ***Underground, Grammer, 3-point seat belt***

Available for A25G, A30G, A35G, A40G, A45G, A45GFS

AH42007

- Grammer Actimo air suspended seat, electrically heated.
- Lower bracket than AH42006, giving a lower seat position.
- 3-point seat belt, 2" wide orange color with belt warning.
- Air operated weight adjustment and height adjustment.
- Automatic adjustment for operator weight 50 – 130 kg
- Pneumatic lumbar support
- Technical restrictions: Only in combination with Underground cab (AH40001)



### **Armrest**

Available for A25G, A30G, A35G, A40G, A45G, A45GFS, A60H

### ***For KAB***

Available for A25G, A30G, A35G, A40G, A45G, A45GFS, A60H

AH41018

### ***For Grammer***

Available for A25G, A30G, A35G, A40G, A45G, A45GFS, A60H

AH41029



### **Head restraint**

Available for A25G, A30G, A35G, A40G, A45G, A45GFS, A60H

### ***For KAB***

Available for A25G, A30G, A35G, A40G, A45G, A45GFS, A60H

AH41005

### ***For Grammer***

Available for A25G, A30G, A35G, A40G, A45G, A45GFS, A60H

AH41030




---

#### Seat belt XXL, non retractable

---

Available for A25G, A30G, A35G, A40G, A45G, A45GFS, A60H

AH41003

70" extra long, non-retractable seatbelt, 3" wide.

Remark: with this belt option, the belt warning is disconnected.




---

#### Cab heating/ventilation timer

---

Available for A25G, A30G, A35G, A40G, A45G, A45GFS, A60H

AH41028

When leaving the machine e.g. for lunch break, the operator can stop the engine and the system will maintain a comfortable temperature in the cab. There are two working modes, automatically chosen by the system, depending on the ambient temperature:

- Heating mode - when the temperature is lower than +17° C (63° F)
- Ventilation mode - when the temperature is higher than +17° C (63° F)

The button for activation/deactivation of the timer is located on the climate control panel.




---

#### Radio installation kit

---

Available for A25G, A30G, A35G, A40G, A45G, A45GFS, A60H

AH41025

The kit consists of a radio slot, two loudspeakers, aerial, voltage converter (20 A), wiring harness and 12 V outlet.



#### Radio with Bluetooth/USB/AUX

Available for A25G, A30G, A35G, A40G, A45G, A45GFS, A60H

AH41010

Stereo with standard configuration.

**RDS-tuner FM/MW/LW** with priority to **Traffic Announcements** (TA, EON-TA).

The tuner recognizes traffic programs to bring you the latest traffic information.

**Travel store function:** The system automatically searches and registers the 5 strongest receptions in the region. This allows quicker setup when moving the machine to a new worksite.

**Bluetooth:** Up to 5 different Bluetooth devices can be paired; connection can be switched quickly and easily to any of these devices.

**Phone calls via Bluetooth and cell-phone:** Once paired to your cell phone, the integrated microphone and direct access button to answer and reject calls allows this radio to be used as a hand free device to place calls. For even more convenience, the radio can store up to 5 phone numbers for faster dialing.

**Streaming music via Bluetooth:** Once paired to e.g. an MP3 player, the radio allows you to navigate and select a track and play your music via the machine's loudspeakers.

**USB and SD-card slots:** The radio is able to play MP3 and WMA files from memory sticks / cards.

**USB slot:** The radio is able to play audio from an iPod & iPhone.

**AUX ports:** Allows connection of an MP3 player or other types of portable player to the system.

**4x45 Watts** (max. power)

Remark: Must be combined with Radio installation kit option (AH41025).



#### Rear view mirrors, adjustable electrically heated

Available for A25G, A30G, A35G, A40G, A45G, A45GFS, A60H

AH50011

Mirrors are electrically adjustable from inside the cab. Heating keeps them free from mist and ice in damp or cold weather conditions or when working underground. The mirror glass is equipped with a heating coil on the back. The appropriate switch and control light are located on the instrument panel.



#### Anchorage, operator's manual

Available for A25G, A30G, A35G, A40G, A45G, A45GFS, A60H

AH41007

Operator's Manual is attached to the cab interior with a wire.




---

#### Sun blinds, side windows

---

Available for A25G, A30G, A35G, A40G, A45G, A45GFS, A60H

AH41012

Two sun shades are fitted to the front side windows, of the same type as the standard one in the front window. The blinds are made of a transparent material, which effectively reduces the amount of sunlight entering the cab.




---

#### HEPA cab filter (asbestos dust protection filter)

---

Available for A25G, A30G, A35G, A40G, A45G, A45GFS, A60H

AH41015

This option replaces the standard main filter in the cab air intake. It has a red filter frame to be recognizable. HEPA (High Efficiency Particulate Air) fiber filter is recommended for extremely dusty working conditions or environments with fine harmful dust particles (e.g. asbestos).

#### Typical work applications:

- Sanitary landfills
- Refuse depot compactions
- Asbestos quarries.

#### Filtration efficiency:

- Class H13 according to EN 1822 and Class S according to DIN 24184.
- Fulfills the Swedish Board of Occupational Safety and Health regulation "AFS ASBEST 2006-1".




---

#### Rear windscreen wiper and washer

---

Available for A25G, A30G, A35G, A40G, A45G, A45GFS

AH41021

Wiper and washer to keep the cab's rear window clear for improved visibility and work efficiency. Both functions are activated via a single switch on the right hand side dashboard. Designed for Hauler Chassis applications.




---

#### Anti-theft system (pin code)

---

Available for A25G, A30G, A35G, A40G, A45G, A45GFS, A60H

AH50001

A four-digit code must be entered via the operator communication system (Contronics) to enable engine start. The anti-theft protection may be deactivated and the code may be changed with the Volvo service tool (Techtool).




---

#### Safety kit (first aid kit and fire extinguisher)

---

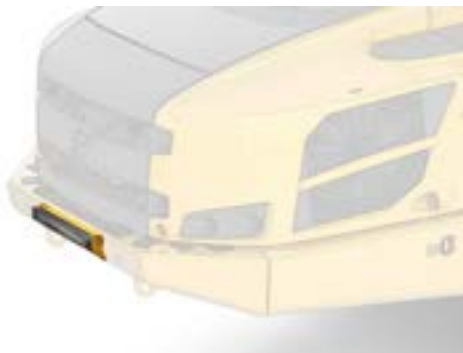
Available for A25G, A30G, A35G, A40G, A45G, A45GFS, A60H

AH70002

Consists of:

- First aid kit in a bag
- Fire extinguisher (powder type, 6 kg)

The extinguisher complies with Swedish standards (SSEN3-7). Please check if the option is approved for your market before ordering. If not, order a separate bracket (AH70008) and get an extinguisher locally for your market.




---

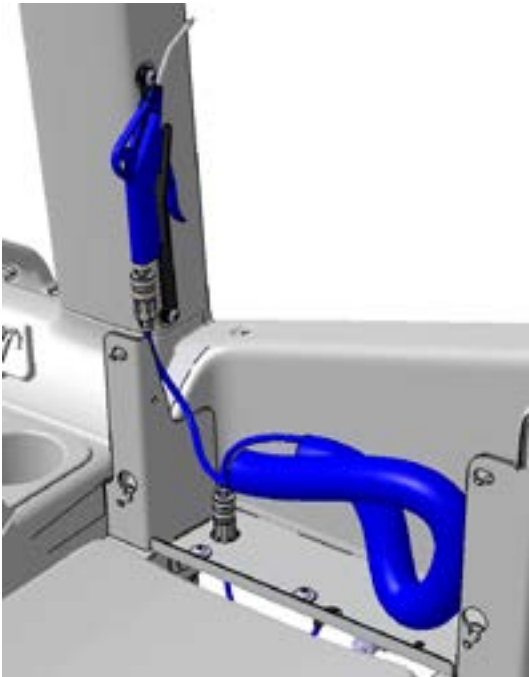
#### Front protection, rubber

---

Available for A25G, A30G

AH70004

Two rubber blocks mounted on front part of the frame to protect the front engine hood e.g. when operating in tunnels.



---

### Air blow gun

---

Available for A25G, A30G, A35G, A40G, A45G, A45GFS, A60H

AH51033

Contains an air compressor nozzle to maintain and clean the cab. The nozzle is installed behind the instructor seat. With the machine shut off, air tank will provide pressure for a short period of time. With the machine running, it provides pressure continuously.

### Specifications

- Quick coupling.
- Hose length 2-10 m (spiral hose).

# Hydraulics



## Hydraulic fluid, biodegradable

Available for A25G, A30G, A35G, A40G, A45G, A45GFS, A60H

AH60001

Hydraulic oil is replaced by an environmental-friendly, non-toxic biologically degradable fluid, based on saturated synthetic esters. It ensures minimal environmental impact and recommended for machines, operating in e.g. water conservation areas. The biodegradeable oil features high viscosity index, oxidation stability, good lubrication qualities and corrosion protection. Remark: it can only be used in the hydraulic system and can't be mixed with any other hydraulic fluids.



## Hydraulic fluid, hot climate

Available for A25G, A30G, A35G, A40G, A45G, A45GFS, A60H

AH60002

Standard VG46 Hydraulic oil is replaced by VG68 Hydraulic oil, with higher viscosity suitable for hot climate. For reference: see Operators Manual, chapter Recommended lubricants.



## Arctic oil kit

Available for A25G, A30G, A35G, A40G, A45G, A45GFS, A60H

AH81015

Improves machine's operating capacity, ensuring better performance and uptime at low ambient temperatures: -30° C or below.

Content (changed vs. standard hauler):

- Engine oil
- Hydraulic oil.
- Grease.
- Coolant.



## No Auxiliary Hydraulics (HC only)

Available for A25G, A30G, A35G, A40G, A45G, A45GFS

This option is used for superstructures that do not require any hydraulics for the operation (e.g. transport platforms and trailer tractors). It is automatically added to the specification, if selecting "Without body" when ordering the machine. It is not shown in the MOM order system as a separate option. The machine still features a standard tipping lever in the cab, but the tipping functionality is deactivated. It can be re-activated with Techtool. The hydraulic interface for superstructures is a standard connective block mounted on the front part of the rear frame, so no modifications will be required. The hydraulic pressure and flow is equal to a standard articulated hauler.



#### Hydraulics Open Center 25 MPa (HC only)

Available for A25G, A30G, A35G, A40G, A45G, A45GFS

AH61002

This option is designed for external equipment using an "open center" hydraulic system. It allows easy connection of external hydraulics with no modifications needed. A hydraulic interface for superstructures is fitted on the rear frame standard connective block. The machine's working hydraulic function is activated with an electric switch, as the tipping lever is deactivated. This option is available as an aftermarket kit. Remark: the hydraulic pressure and flow are equal to a standard articulated hauler. 25 MPa = 3600 psi.



#### Hydraulics Load Sensing 25 MPa (HC only)

Available for A25G, A30G, A35G, A40G, A45G, A45GFS

AH61003

This option is designed for external equipment with a "closed center" hydraulic system, using a load-sensing signal. It allows easy connection of external hydraulics with no modifications needed. A hydraulic interface for superstructures is fitted on the rear frame standard connective block with an additional line for the load-sensing signal. The machine's working hydraulic function is activated with an electric switch, as the tipping lever is deactivated. This option is available as an aftermarket kit. Remark: the hydraulic pressure and flow are equal to a standard articulated hauler. 25 MPa = 3600 psi.



#### Hydraulics Open Center 32,5 MPa (HC only)

Available for A25G, A30G

AH61004

This option is designed for external equipment (e.g. hooklifts), using a high pressure "open center" hydraulic system. It allows easy connection of external hydraulics with no modifications needed. A hydraulic interface for superstructures is fitted on the rear frame standard connective block with an additional line for the load-sensing signal. The machine's working hydraulic function is activated with an electric switch, as the tipping lever is deactivated. This option is available as an aftermarket kit. Remark: the option includes extra boost pressure pump. Hydraulic pressure (32.5 MPa) and flow differs from a standard articulated hauler. 32.5 MPa = 4700 psi.

# Service and maintenance



---

## Tool kit

---

Available for A25G, A30G, A35G, A40G, A45G, A45GFS, A60H

AH71003

Simplifies daily maintenance and service. The tool kit contains:

- Grease gun
- Tool bag
- Screwdriver
- Adjustable wrench
- Torx wrench
- Allen wrench
- Socket wrench with extension
- Box end wrench
- Tire inflation hose
- Air pressure gauge.



---

## Auto lube system for standard machine

---

Available for A25G, A30G, A35G, A40G, A45G, A45GFS, A60H

AH72001

Our factory-installed Automatic Lubrication System (Groeneveld Twin) takes care of greasing while the machine is in operation. This means less downtime for scheduled maintenance and more time for productive work.

The system provides automatic lubrication for:

- Steering joint bearings (2)
- Steering cylinder bearings (2)
- Tipping joint bearings (2)
- Tipping cylinder bearings (4)

During operation, the grease is automatically dispensed by a piston pump, via progressive plunger metering distributors to all connected lube points in the system. Lubrication cycle time and interval time are adjustable to provide the correct amount of grease to each lubrication point, depending on the operating conditions. A display with control unit is installed in the cab. The grease pump with integrated control unit and a transparent reservoir (4 litre/1 gallon) is located in a steel casing on the rear frame. After-market option is available for all F and G-series haulers.



---

## Lubricating hoses Ground Level Greasing

---

Available for A25G, A30G, A35G, A40G, A45G, A45GFS

AH72003

Hoses fitted to the upper tipping cylinder joints, enhance manual greasing from ground level. The hoses feature grease nipples at their lower ends. Improving ease of greasing and safety, the option helps to maintain the proper lubrication intervals.



#### Lubricating hoses Ground Level Greasing for tailgate

Available for A25G, A30G, A35G, A40G, A45G, A45GFS

AH72004

If the machine is equipped with wire operated tailgate (AH83004) and Ground Level Greasing (AH72003), this option will be automatically selected. Hoses fitted to the pivot bearings of the tailgate enhance manual greasing from ground level. The hoses feature grease nipples at their lower ends. Improving ease of greasing and safety, the option helps to maintain the proper lubrication intervals.



#### Engine auto shutdown

Available for A25G, A30G, A35G, A40G, A45G, A45GFS, A60H

AH31012

To save fuel, this feature shuts down the engine automatically after 15 minutes idling. With Techtool it is possible to change the time settings for this feature. It can be turned off by the operator via the Contronics control panel.



#### Auto lube system for tailgate

Available for A25G, A30G, A35G, A40G, A45G, A45GFS

AH72002

If the machine is equipped with wire operated tailgate (AH83004) and Auto Lube system (AH72001), this option will be automatically selected. It provides automatic lubrication of the two pivot points of the tailgate. The option is available as an aftermarket kit.

# Miscellaneous



## Towing hitch

Available for A25G, A30G

AH81019

Towing hitch for light trailer.  
Max horizontal load: 8 500 kg.  
Max vertical load: 1 500 kg.



## A25G Twin steer

Available for A25G

AH81036

With A25G as a base, A25G Twin Steer is adapted applications with long and/or frequent reversing.

### Twin Steer includes:

- Rotating operator seat.
- Dual operating controls.
- Body with front grid.
- Rear windshield wiper.
- Extra rear –front view mirrors.
- Extra rear –front view monitors.
- Extra central warning signal.

By rotating the operator's seat, the operator is always facing the operating direction. The position of operator's seat activates and deactivates the rear controls. When activating the rear controls, the speed will be limited to 15 km/h.

Additional steering-, throttle-, and brake controls makes long distance reversing easier. Rear window wiper, central warning signal, monitor and adapted side dash board further improves the operator comfort

The machine is also equipped with front and rear view vision system (cameras+ monitors) so correct image is always shown on both monitors, regardless of position of the operator's seat. The machine is also equipped with extra mirrors for good visibility forward and reverse.



## Twin steer body

Available for A25G

AH82004

To improve visibility, when operating unloaded with the operator's seat in reverse position, the body has a grid in the front.




---

#### Wheel blocks

---

Available for A25G, A30G, A35G, A40G, A45G, A45GFS, A60H

AH70001

Wheel chocks used to block the wheels when parking or during service work on the machine.

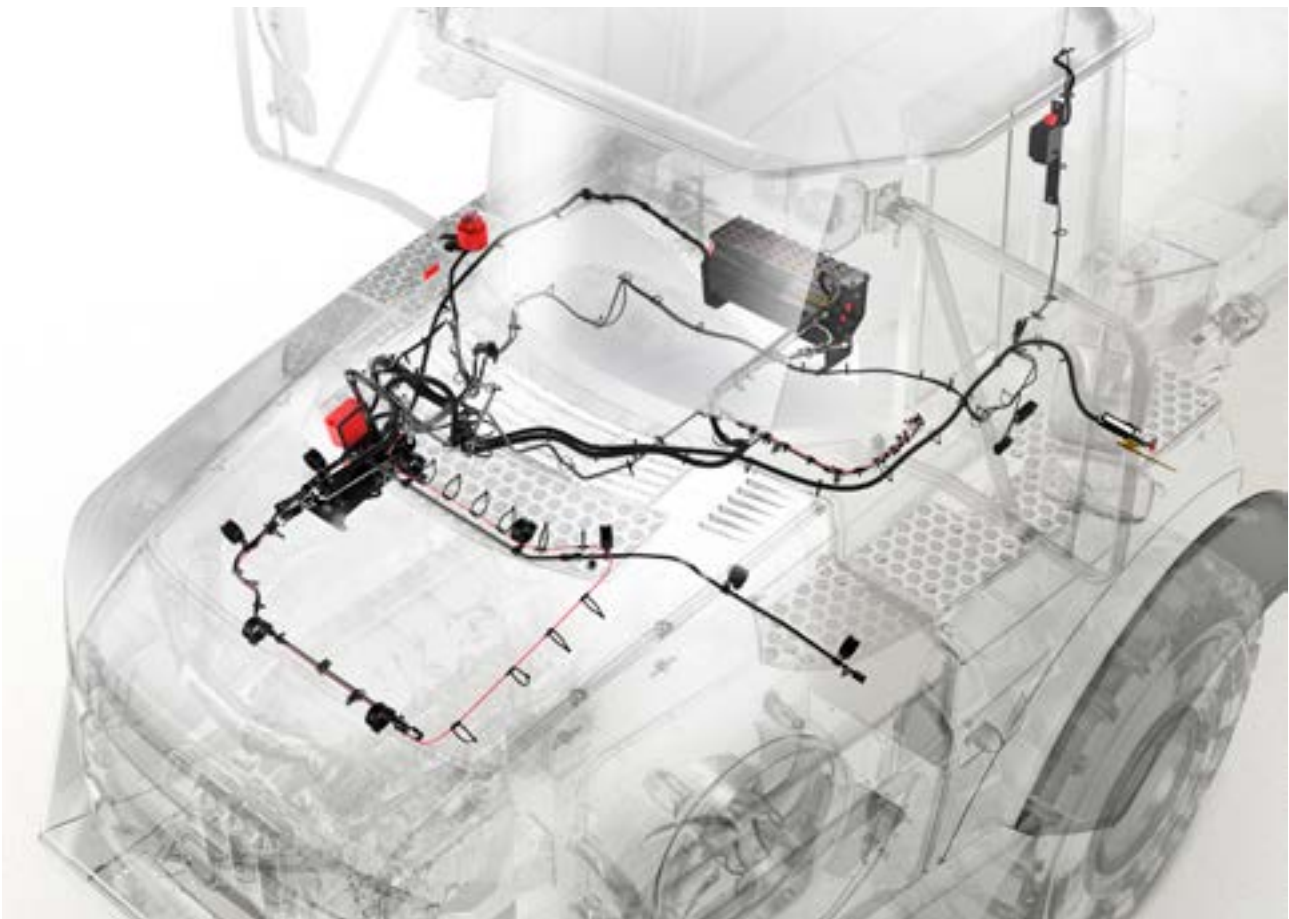
---

#### Fire Suppression System

---

Available for A25G, A30G, A35G, A40G, A45G, A45GFS, A60H

AH41033



The fully integrated, factory installed, fire suppression system developed especially for Volvo articulated haulers has 16 nozzles and is automatically activated inside the engine bay and under the cab when fire is detected. The tailor made system can be manually triggered from both inside and outside the cab and is gentle on components for increased life, uptime and low repair costs. The feature gives the operator time to reach safety and if possible, protect the machine and surrounding from further damage.

#### Detailed description

The fully integrated, factory installed, fire suppression system developed especially for Volvo articulated haulers has 16 nozzles that are automatically activated inside the engine bay and under the cab when fire is detected. The system is tailor made for Volvo and can be manually triggered with injecting wet chem liquid to suppress fire from both inside and outside the cab.

The wet chem liquid system is not as aggressive on components as conventional dry chem powder systems which provides increased component life, uptime and low repair costs. When activated, the system signals the surrounding area through an audio and light signal.

Fire is unpredictable so it's important to give the operator time to reach safety and if possible, avoid/prevent the fire from spreading further to protect the machine and surroundings from damage. In most cases, the system that has been tested intensively, will completely extinguish the fire. Volvo can also provide onsite service support for regular inspection of the system to ensure correct functionality.

#### **Automatic activation**

- The system will automatically activate if the machine is parked and fire is detected.
  - o When the machine is parked and shut down, the system will fully automatically activate the fire suppression system.
  - o If the machine is parked but engine is still running, the system will shut down the engine before the fully automatic fire suppression system is activated.

#### **Manual activation**

- Machine in work. The operator gets info via control panel & alarm. The operator then has to activate the system, either with the activation switch or the control panel.
  - o When activated via the activation switch. Engine stops / main switch cuts electrics / fire suppression system activates.
  - o When activated via the control panel. Fire suppression system activates with engine still running, possibility to move machine to safe area.
- It is always possible to activate the system with the manual activation device, located on the outside of the machine.

#### **Component and location description**

1. Control panel
2. Expellant gas cylinder
3. Strobe light and siren
4. Control unit
5. Wet chem liquid tank
6. Sprinkler circuit with detector cable
7. External activation switch

#### **Control panel**

The control panel is only a display and input unit. All the functionality is placed in the control unit.

Volvo Fire Suppression system will operate in automatic mode even if the Control panel is disconnected or broken.

- A. Plastic covers. Works as a safety seal. The safety seal has to be broken to activate the system via the control panel.
- B. Manual activation switch. Push and hold the button for 1 second to activate the sprinkler system when fire is indicated. The engine is not stopped. Can also be used when the machine has to be moved at the same time as the system is activated.
- C. Light-emitting diode. Will indicate when fire is detected. The siren and strobe light will be activated at the same time.
- D. Light-emitting diode. Will indicate when there is a malfunction of the activation functionality. If the light-emitting diode is on, contact an authorized Volvo workshop.
- E. Light-emitting diode. Will indicate when there is a malfunction of the detector circuit. If the light-emitting diode indicates, contact an authorized Volvo workshop.
- F. Light-emitting diode. Will indicate when the system is in manual mode and when the parking brake is released.
- G. Light-emitting diode. Will indicate when the machine is parked and the system is in automatic mode.
- H. Test/Reset button. All diodes, siren and strobe light are activated for approx. three seconds. A daily test is recommended.

#### **Liquid specification**

Fire Suppression Liquid is a wet chemical based on a glycol. The liquid has a working temperature from -30 °C to 99 °C (-22 °F to 210 °F) and has a density of 1,1 kg/liter. See the safety data sheet for further information.

#### **Service program**

The service program shall be used as a check list in connection with function check of the Fire Suppression System. For work descriptions, see Prosis Service and Maintenance FGI 173 for respective machine.

#### **Certification**

The system fulfills safety level SBF127 (Swedish fire protection association) for construction machines.




---

#### Fire extinguisher

---

Available for A25G, A30G, A35G, A40G, A45G, A45GFS, A60H

AH40007

6 kg (13 lb) fire extinguisher installed on the outside of the machine, mounted close to the hydraulic tank. The extinguisher requires a mounting bracket, which will automatically follow if this option is ordered.

The extinguisher complies with Swedish standards (SSEN3-7). Please check if the option is right for your market before ordering. If not, order the bracket and get an extinguisher locally for your market.




---

#### Bracket Adj, Fire Extinguisher

---

Available for A25G, A30G, A35G, A40G, A45G, A45GFS, A60H

AH70008

This option installs an adjustable extinguisher bracket on the outside of the machine, mounted close to the hydraulic tank. The bracket will allow you to install a local extinguisher.

The bracket is adjustable to fit fire extinguishers between 4 kg (8.8 lb) and 12 kg (26.5 lb).




---

#### Transport sealing

---

Available for A25G, A30G, A35G, A40G, A45G, A45GFS, A60H

AH80003

Seals the machine for shipping. The fuel cap, engine hood and battery box are sealed.




---

#### Lifting tools, wheel mounted

---

Available for A25G, A30G, A35G, A40G, A45G, A45GFS, A60H

AH71006

Simplifies lifting of machine. Applied on the wheels of the front axle and first bogie axle using special wheel nuts.




---

#### Transport rust protection R2

---

Available for A25G, A30G, A35G, A40G, A45G, A45GFS, A60H

AH80002

Short-term protective coating for machines that may be exposed to salt during shipment. It forms a light brown, elastic and waxy surface that does not feel tacky or smeary. The solvent base is non aromatic white spirit. Treated details are fasteners and other anodized surfaces.

The machine should be thoroughly cleaned upon arrival.




---

### CareTrack

---

Available for A25G, A30G, A35G, A40G, A45G, A45GFS, A60H

---

CareTrack is the Volvo Construction Equipment telematics system that gives you access to a wide range of machine monitoring information designed to save time and money. It allows to proactively manage machines and increase uptime by planning service and maintenance requirements in advance. Through CareTrack it's possible for local Volvo dealer to troubleshoot faults remotely – minimizing service time. Through operational reports, it is possible to identify excessive idle time which in turn can reduce fuel consumption, non-productive machine hours and service costs. The system can highlight potential problems before they happen to save costly maintenance bills.

The system gives access to a wealth of information, from fuel consumption data to location and machine usage reports. CareTrack presents infinite opportunities to help get the most out of machine, just starting by making a few simple changes and set specific functionalities to unlock further benefits.

A number of CareTrack services packages are available, depending on the requirements. For more information on services packages, please connect to Machine Ordering Management system (MOM) – services packages might be only available for some products or for some markets.

Customer benefit:

- Basic requirement to have access to other Volvo Services (depending on market availability).
- Optimize productivity, save money and time, reduce fuel costs.
- Optimize machine and operator performance.
- Proactively manage service and maintenance to maximize uptime.
- Tailored service to customer requirements.

Not all products are available in all markets. Under our policy of continuous improvement, we reserve the right to change specifications and design without prior notice. The illustrations do not necessarily show the standard version of the machine.







**V O L V O**